



St John &  
St Elizabeth Hospital



# Consultant & Service Directory

Autumn - Winter 2023/2024

[www.hje.org.uk](http://www.hje.org.uk)

Navigate the pdf version by clicking the page numbers on the contents and index pages

**PLEASE NOTE:**

We release new versions of our Consultant & Service Directory twice a year, with quarterly digital updates.

This is the Autumn - Winter 2023/2024. The next full release will be in Spring 2024.



# Contents

## About us

- 05** Useful information
- 06** For primary care clinicians
- 07** For consultant specialists
- 08** Our history
- 09** Our staff
- 10** Our hospice
- 11** Patient feedback
- 13** Urgent Care Clinic

## Services

- 14** Service directory

## Consultants

- 36** Index: consultants A-Z
- 64** Consultant directory



St John & St Elizabeth Hospital  
60 Grove End Road  
London, NW8 9NH

Primary Care Liaison  
[gpliaison@hje.org.uk](mailto:gpliaison@hje.org.uk)  
**020 7432 8326**

**f** [stjohnandstelizabethhospital](https://www.facebook.com/stjohnandstelizabethhospital)  
**t** [@StJohnElizHosp](https://twitter.com/StJohnElizHosp)  
**@** [stjohnandstelizabethhospital](https://www.instagram.com/stjohnandstelizabethhospital)  
**l** [st-john-and-st-elizabeth-hospital](https://www.linkedin.com/company/st-john-and-st-elizabeth-hospital)

SP8044 – 2023 (review)



# Foreword



## Welcome to our Autumn-Winter 2023/2024 Consultant & Service Directory.

**I am honoured to be appointed as the new Chief Executive and look forward to working for a well-established organisation with such a unique history. We embark on the next exciting chapter, continuing to serve patients in the local community and across London.**

Every referral we receive from a primary care professional like yourself, not only allows us to continue providing care to your patients, but also helps to fund our on-site hospice, St John's.

St John's Hospice provides free quality holistic care to over 4,500 patients and their families, as well as providing bereavement counselling for adults and children, social services and Hospice@Home visits. So, every time you send a patient to us, we can help more people when they need it most.

Our new imaging department, theatres, day case suite, admissions lounge and urgent care centre are now open and in full swing. With the latest upgrades in technology and our first-class consultants we look forward to continuing serving our community.

Thank you again for supporting our charitable hospital. With my best wishes,

**Simon James, CEO**

# About us

## Useful information

### Main switchboard

**0207 806 4000**

### Urgent Care

Urgent Care Clinic is open  
Monday to Friday 8am - 8pm  
\*Last patient at 7pm

Saturday and Sunday 8am - 6pm  
\*Last patient at 5pm

Walk-in service. No appointment required.

Contact the team on **0207 432 8300**

### Outpatient referrals

The Outpatient Department is open:  
Monday to Friday 8am - 8pm  
Saturday 8am - 2pm

**0207 806 4060**  
**outpatients@hje.org.uk**

### Primary Care Liaison

**0203 370 1012**  
**gpliaison@hje.org.uk**

### Departments

Admissions: **0207 078 3868**

Cardiology: **0207 806 4080**

Imaging: **0207 806 4030**

Pharmacy: **0207 806 4036**

Physiotherapy: **0207 806 4010**

Pathology: **0207 806 4022**

Respiratory Physiology: **0207 806 4081**

Hospice Fundraising: **0207 806 4011**

### Hospice referral

Looking to refer a patient to our hospice?  
Email our team at **hospice.info@hje.org.uk**  
**nhsnw1.stjohnsreferrals@nhs.net**  
or call **0207 806 4040**

### St John & St Elizabeth Hospital

60 Grove End Road, London, NW8 9NH



Closest Tube: **St John's Wood (Jubilee Line)**

Distance: **3-minute walk**

### Inpatient referrals

Monday to Friday 7am - 6pm  
**0207 806 1002** | **admissions@hje.org.uk**

The Admissions Office will make all the necessary arrangements to admit routine and urgent admissions, including patient transport.

### Out of hours and urgent admissions

The hospital operates the following on-call rotas to assist clinicians:

- Orthopaedic Trauma • Surgeons • Plastics
- Physicians • Urology

Outside office hours, unplanned admissions will be coordinated by the Duty Manager.

Contact the hospital switchboard on **0207 806 4000** and ask for the 08 Bleep Holder/Duty Manager.

We are accredited by all major insurers



# For Primary Care clinicians

Every referral from one of our GP or AHP partners contributes to running St John's Hospice. This is why engagement with our local medical community is of the utmost importance.

We provide a range of free services to all primary care clinicians:

### CPD Education Programme

Our well-established webinar programme regularly sees attendees join twice a month for CPD accredited online learning events.

You can subscribe here and always be kept up to date with upcoming online and in-person events on Eventbrite.

### CPD Hour (One Hour)

Earn one CPD point on a weekday evening.

### CPD Masterclass (Two Hours)

Two CPD points are awarded for a deeper dive into specific topics.

### CPD Annual Symposium (Five Hours)

Gain up to Five CPD points on a Saturday.

#### GP Liaison

E [gpliaison@hje.org.uk](mailto:gpliaison@hje.org.uk)  
T 0207 370 1012 (Option 7)

# For our referring partners

If your practice is within our local area, we may also be able to provide these special benefits:

#### Basic Life Support

We can arrange for a trainer to visit your practice to give Basic Life Support (BLS) level 1 and level 2 training to both clinical and non-clinical staff.

#### Practice-based CPD

We provide focused and intimate lunch & learns for your practice with our field-leading specialists. You decide the format that suits your practice's individual needs.

Please contact our GP Liaison team on [gpliaison@hje.org.uk](mailto:gpliaison@hje.org.uk) or call **0207 432 8326**.

# For consultant specialists

Our Practising Privileges team works to promote clinical excellence and supports our consultants in delivering the highest levels of patient care.

If you are considering an application for practicing privileges at St John & St. Elizabeth Hospital, please contact the Practising Privileges team directly. Include a cover letter in your application, with an outline of your proposed scope of practice addressed to our CEO, Simon James.

#### Practice Privileges

E [Practising.Privileges@hje.org.uk](mailto:Practising.Privileges@hje.org.uk)  
T 0207 806 4096

Based on your area of specialty, our team will be able to guide you further and help facilitate your application. Applications will be reviewed at our quarterly governance committee meeting.

You will then be invited to a meeting to discuss your application. If supported by the CEO, the Medical Advisory Committee will consider your application for practicing privileges.

If your application is successful, our compliance team will assist in maintaining your regulatory documentation throughout your time with us.

Please get in touch if you would like to discuss the process further.



# A brief history

## The UK's leading independent hospital

**Founded in 1856 under the care of the Sisters of Mercy, an order of nuns who worked with Florence Nightingale in the Crimean War, our hospital pioneered the use of advanced nursing techniques to help the sick, the dying and the needy in the local community.**

Now, all these years later, our ethos remains at the heart of what is regarded as a unique London hospital. We are a private hospital, but we are also a registered charity, investing the profits of the hospital into our on-site hospice.

Both the hospital and hospice take great pride in their heritage, which assures patients of a commitment to care and compassion in the delivery of their healthcare.

St John's Hospice is the main beneficiary of St John & St Elizabeth Hospital. In addition to providing financial support, our relationship is crucial to the unique model of care the hospice can provide to patients.

All X-rays, Pathology, and Pharmacy are delivered on-site, enabling us to offer a streamlined experience for our patients. The aim of both is the same now as it was over 165 years ago – to provide the highest quality care for those who need it most.



# Our staff

## Nursing excellence

**Our hospital strives to be the premier option for patients seeking the highest quality healthcare. At the centre of this is our nurses. We are renowned for our exceptionally high standards of nursing care and are constantly striving to improve our patients' experience. In our 2022 and 2023 patient satisfaction surveys, nearly 98% rated their experience of our service as 'Good' or 'Very Good.'**

### Field leading clinicians

From our specialist therapies team to our surgeons, our clinicians are of the highest standard. Each of our specialist consultants are experts in their field. The feedback in our patient satisfaction surveys has consistently highlighted that over 99% of patients are 'likely or extremely likely,' to recommend our consultants.

### Putting people first

All our staff provide exemplary care to each patient, when you walk around our hospital, you will quickly notice that the atmosphere is unique and welcoming. Our team is close-knit, and works together to always go above and beyond for all our patients.

**The overwhelmingly positive results of our recent patient satisfaction survey show how everything we do is centered on putting people first.**





**St John's Hospice is part of the charitable St John & St Elizabeth Hospital. We provide quality, holistic care to people living with life-limiting illnesses and their families.**

We are committed to celebrating and amplifying life, enabling people to live well for as long as possible. We create moments of joy and compassion both inside and outside of our hospice and work to ensure that each of our patients and their families are supported through every aspect of their journey.

As well as our Inpatient and Day Care Unit located within the hospital, we work out in the community, in people's homes, providing care to more than 4,500 people every year. Our services include community care, Hospice@ Home, day services, inpatient care, social and welfare support, therapies and bereavement support.

All our care is provided completely free of charge and is available to anyone aged 18 or over living in one of our service catchment areas. This includes the London boroughs of Westminster, Brent, Camden, Hammersmith & Fulham, Islington, Kensington & Chelsea.



# Patient satisfaction at St John & St Elizabeth Hospital



## Referrals to St John's Hospice

We accept referrals made by a patient's GP, hospital doctor, nurse specialist and community nurse or by other professionals working across health and social care services.

To find out more about St John's Hospice, our care and referrals process, please visit [www.stjohnshospice.org.uk](http://www.stjohnshospice.org.uk). Alternatively, please call us on **020 7086 4040** or email [hospice.info@hje.org.uk](mailto:hospice.info@hje.org.uk).





## Urgent Care Clinic

- Our Urgent Care Clinic offers a range of treatments including vaccinations, sexual health screening and minor procedures.
- Our walk-in Urgent Care service is to treat minor non-life-threatening injuries and illnesses for adults and children from the age of one.
- The new clinic is based next to the new imaging department, so patient access to this service is much simplified. This is making a huge difference to patients who need urgent help or who have difficulty walking.
- £120 – consultation with a doctor

### What we can and can't help with

#### We can help with a wide range of minor illnesses and injuries, including:

- Fractures, sprains and strains
- Superficial cuts to the face and scalp Burns, cuts and grazes
- Sore throats/ tonsillitis
- Chest infections
- UTIs
- Stomach aches
- Ear infection
- Kidney stones

#### We can't treat any of the following:

- COVID-19
- Heart attacks or strokes
- Chest pain
- Dental issues
- Major trauma
- Head injuries
- Pregnancy related conditions
- Mental health conditions, such as anxiety and depression
- Poisoning or medication overdose
- Acutely unwell children
- Children under the age of one

### Our Urgent Care Clinic

Call now: **0207 432 8300**

Email: **ucc@hje.org.uk**

#### Walk-in service

(no appointment required)

**Monday to Friday 8am - 8pm**

\*Last patient at 7pm

**Saturday to Sunday 8am - 8pm**

\*Last patient at 5pm

# Service directory

- 15 Autonomic & Neurovascular Medicine
- 15 Breast
- 16 Cardiac
- 16 Cosmetics
- 17 Dermatology
- 18 ENT
- 18 Elbow
- 19 Eye
- 20 Foot & Ankle
- 20 London Foot & Ankle Centre
- 22 GI
- 22 Gynaecology
- 23 Private GP Practice
- 24 Hand & Wrist
- 25 Hernia
- 25 Hip
- 26 Imaging
- 27 Knee
- 28 MaxFax
- 29 Paediatric
- 30 Respiratory
- 31 Shoulder
- 32 Spine
- 33 Stroke
- 34 Therapies
- 35 Urology
- 35 Varicose Vein

## Autonomic & Neurovascular Medicine



**The Autonomic & Neurovascular Medicine Clinic provides a highly specialised diagnostic service for a wide variety of autonomic disorders.**

Autonomic investigations play a key role in helping doctors diagnose disorders such as postural tachycardia syndrome, syncope, orthostatic intolerance, pheochromocytoma and orthostatic hypotension.

**Services include:**

- Head up tilt test
- Autonomic function screening test
- Autonomic cardiovascular responses to a liquid meal
- Autonomic cardiovascular responses to modified exercise
- 24hr ambulatory blood pressure and heart rate monitoring with autonomic protocol
- Autonomic cardiovascular responses to head and/or arm movements
- Autonomic cardiovascular responses to octreotide/ pyridostigmine / sildenafil
- Plasma catecholamine blood samples (supine/ tilted/ spot)

Call now: **0203 370 1013** Email: [autonomic@hje.org.uk](mailto:autonomic@hje.org.uk)

## Breast



**Our one-stop breast clinic is led by a multi-disciplinary team that includes some of the country's top breast consultants and nurses.**

**Breast imaging services:**

- Full field digital mammogram
- Breast ultrasound
- Fine needle aspiration & core biopsy
- Stereotactic localisation
- Breast MRI scan
- Breast CT scan

Call now: **0203 370 1041** Email: [breastunit@hje.org.uk](mailto:breastunit@hje.org.uk)



## Cardiac



**Our Cardiac Clinic offers comprehensive services provided by a highly skilled medical team.**

We can provide fast and accurate investigations and treatment. All tests are reported by a consultant cardiologist and we aim to give test results within 24 hours.

### Services include:

- 12 lead resting ECG
- Echocardiography
- Echocardiogram with bubble study
- Exercise stress echocardiogram
- Dobutamine stress echocardiogram
- Exercise test
- Cardio-pulmonary exercise test (CPEX/CPET)
- Patient ambulatory monitoring (including BP, holter, single channel ECG and event recorders)
- Implantable device check-ups (including pacemaker and ICD checks)

Call now: **0207 806 4080** Email: [cardiology@hje.org.uk](mailto:cardiology@hje.org.uk)

## Cosmetics



**We offer expert cosmetic surgery clinics featuring leading cosmetic surgeons, all specialising in different areas of cosmetics. This means patients receive the best treatment from a specialist in the relevant field..**

Same day appointments are offered for common treatments including IPL, peels, and microneedling.

### Services include:

#### Body surgery

- Arm lift
- Liposuction
- Thigh lift
- Tummy tuck

#### Breast surgery

- Breast augmentation
- Breast reduction
- Breast uplift

#### Cosmetic procedures

- Brow lift
- Ear correction
- Eye surgery
- Facelift
- Liposuction

- Male breast reduction (gynaecomastia)
- Mid facelift
- Nose reshaping (rhinoplasty)

#### Non-surgical procedures include:

#### Facial treatments

- Accent radiofrequency
- Chemical TCA peels
- Dermal fillers
- Fractional laser resurfacing
- HydraFacial
- Intense Pulsed Light Therapy (IPL)
- Medik8 peels
- Microneedling

- Obagi Blue Peel
- Oxygen facial
- Thread lift
- Ultherapy
- VBeam laser
- Wrinkle smoothing

#### Body treatments

- Cool sculpting fat reduction
- Hyperhidrosis (excessive sweating)
- Laser Hair removal
- Velashape III

\*Certain procedures on this list can only be performed at the on-site Karidis Clinic. They are available on 0207 432 8727

Call now: **0203 370 1015** Email: [cosmeticsurgery@hje.org.uk](mailto:cosmeticsurgery@hje.org.uk)



## Dermatology



**Our Dermatology Clinic provides same day appointments and expert dermatology consultants with a wealth of experience in diagnosing and treating skin conditions.**

### Services include treatment of:

- Acne
- Warts
- Cysts
- Milia
- Skin tags
- Campbell de Morgan spots
- Liver spots
- Lipomas
- Scars
- Skin cancer

The clinic is renowned for its revolutionary and innovative treatment methods.. This guarantees patients the highest standard of care as well as the fastest possible. recovery

Call now: **0203 370 1026** Email: [dermatologyunit@hje.org.uk](mailto:dermatologyunit@hje.org.uk)

## ENT



**Experts in conditions of the ear, nose and throat, we provide same day appointments with experienced ENT consultants.**

Our ENT clinic is renowned for its revolutionary and innovative laser treatments, such as a Laser Tonsillectomy.

### Services include:

#### The Ears

- Hearing loss
- Ear infections
- Balance disorders
- Tinnitus

#### The Nose

- Injuries to the nose
- Deformities of the nose
- Adenoidectomy
- Sinus infections
- Seasonal allergies
- Tumours of the nose and sinuses

#### The Throat

- Inflammations of the throat
- Laryngitis
- Snoring
- Voice and swallowing disorders
- Tumours of the throat and larynx
- Swelling of the neck
- Cysts
- Thyroid disorders and tumours (cancerous and non-cancerous) of lymph and salivary glands

#### Cosmetic procedures

- Rhinoplasty
- Otoplasty
- Facial plastics

Call now: **0207 078 3841** Email: [londonent@hje.org.uk](mailto:londonent@hje.org.uk)



## Elbow



**The Elbow Clinic is formed of a specialist group of elbow consultants, dedicated to the highest quality treatment.**

The Clinic's consultants are well known for helping pioneer the use of lasers, and other innovations, for treating the most delicate elbow features.

Working collaboratively with the Shoulder Clinic and other upper body limb specialists, we provide comprehensive treatment plans for elbow fractures, elbow breaks and much more.

### Services include:

Consultations, specialist imaging, physiotherapy and state-of-the-art surgical facilities under one roof in a clean and pleasant environment.

**The Elbow Clinic is fully equipped to surgically manage all types of elbow disorders, including:**

- Tennis elbow
- Golfer's elbow
- Elbow osteoarthritis
- Elbow fractures
- Cubital tunnel syndrome

Call now: **0207 078 3867** Email: [elbowspecialists@hje.org.uk](mailto:elbowspecialists@hje.org.uk)

## Eye



**Our Eye Clinic offers modern treatment techniques and cutting-edge diagnostics for all eye conditions and complaints. Our modern consulting rooms and state-of-the-art visual testing are based together in the clinic, allowing for a progressive same day service and the very best care and treatment, all under one roof.**

### Services include:

- Visual field testing
- Ocular Coherence Tomography (OCT)
- Fluorescein angiography
- Heidelberg Retinal Tomography (HRT)
- Minor lid surgery
- YAG laser treatment (single and double YAG laser)
- Retinal laser treatment
- Injections for the treatment of Age-related Macular Degeneration (AMD)
- Emergency treatment for eye problems
- Biometry
- Botox

### Surgical treatments available include:

- Small incision cataract surgery
- Glaucoma surgery
- Anti-VEGF injections for macular degeneration
- Eyelid surgery
- Squint surgery
- Retinal detachment surgery
- Macular surgery

Call now: **0207 078 3848** Email: [londoneyeunit@hje.org.uk](mailto:londoneyeunit@hje.org.uk)

## Foot & Ankle



**The Foot & Ankle Clinic is a specialist centre for the diagnosis and management of all foot and ankle related issues.**

The team of highly experienced consultants includes specialist foot and ankle surgeons, podiatrists and physiotherapists. All provide personalised high-quality care in the diagnosis and management of a range of disorders associated with the foot and the ankle.

Focused on ensuring the best possible recovery, our foot and ankle specialists deliver the latest treatments using state-of-the-art equipment.

### Services include:

- Achilles injuries
- Foot arthritis
- Heel pain
- Ankle injuries
- Ankle replacement
- Toe deformities
- Podiatry
- Bunion removal

Call now: **0207 806 4044** Email: [footandanklespecialists@hje.org.uk](mailto:footandanklespecialists@hje.org.uk)

## London Foot And Ankle Centre



**LONDON FOOT AND ANKLE CENTRE**



**The London Foot and Ankle Centre (LFAC) was founded in 2003 by respected surgeon Mark Davies, who wanted to improve treatment standards by creating a service concentrating wholly on the foot and ankle. At that time, foot and ankle surgery was in the early stages of development as a distinct specialty in the UK.**

Today, LFAC is an internationally renowned clinic, attracting patients from around the world and working with Premier League football clubs, UK Athletics and many more elite sports people. While other specialist services have been established over the years, LFAC remains distinctive in terms of its longevity, scale and reputation as a leader in foot and ankle treatment.

### Services include:

- Achilles tendon rupture
- Achilles tendonitis
- Ankle osteoarthritis
- Bunions - hallux valgus
- Chronic ankle instability
- Deformed toes
- Flat feet
- Hallux rigidus - stiff big toe
- Metatarsalgia - forefoot pain
- Midfoot arthritis
- Plantar fasciitis - heel pain
- Sports injuries
- Tendinopathy

The LFAC consultants: Mark Davies, Matthew Solan, James Davis and Martin Klinke.

Call now: **0207 078 3800** Email: [enquiries@tlfac.co.uk](mailto:enquiries@tlfac.co.uk)



## GI



**The GI Clinic is a multi-disciplinary group comprised of Gastroenterologists, Upper and Lower GI Surgeons, Radiologists and Oncologists. The GI Clinic's consultants hold senior positions in London's top teaching hospitals, bringing vast expertise and experience to the clinic.**

Our aim is to provide the best facility available for patients seeking treatment for gastrointestinal conditions including irritable bowel syndrome, Crohn's disease, gallstones, pancreatitis and ulcerative colitis. As well as common GI conditions, the clinic offers highly effective gastric balloons and banding options.

**Services include:**

- Bowel cancer screening
- Incontinence
- Rectal bleeding clinics
- Direct access colonoscopy
- One-stop dyspepsia clinics
- Open access gastroscopy
- 256-Slice CT Scanning / virtual colonoscopy
- 3 tesla and 1.5 tesla MRI scanners

Call now: **0207 078 3802** Email: [gi.unit@hje.org.uk](mailto:gi.unit@hje.org.uk)

## Gynaecology



**The Wellwoman Clinic offers a comprehensive service for private gynaecological assessment and treatment. Our holistic approach to healthcare means that we always put the physical, mental and spiritual needs of the patient at the forefront of everything we do.**

Appointments are offered to patients within 24 hours, with clinics available Monday to Saturday, as well as out of hours for emergency appointments. Our consultants are not only trained to the highest standards but have carried out countless successful procedures between them.

**Services include:**

- Abnormal smear test (pap test)
- Abnormal uterine bleeding
- Endometriosis
- Fibroids
- Incontinence
- Menopause
- Pelvic and vaginal pain
- Polycystic ovaries
- Prolapse
- Vulval problems
- Wellwoman checks and screening

**Our specialists are also qualified obstetricians, covering:**

- Early pregnancy problems
- Maternal medical disorders
- Pregnancy scanning
- Postnatal problems
- Recurrent miscarriage

Call now: **0207 806 4098** Email: [London.WellwomanClinic@hje.org.uk](mailto:London.WellwomanClinic@hje.org.uk)



St John & St Elizabeth Hospital



Patient seen for: **Ultrasound** **Irritable Bowel Syndrome (IBS)**

**“ Very good service. Doctors listen, put you at ease and are friendly.**

22nd of March 2022 - **Verified Patient** ✓

## Private GP Practice



**We offer the finest local GP care. Once your patients register with us, they will receive a personal, one-to-one approach, ensuring they are never left without cover. Our exemplary service ensures our patients are seen promptly, accurately assessed, and properly treated.**

Patients will be allocated an appointment quickly in our superbly equipped consulting rooms, at their convenience, with one of our highly experienced GPs, who are all members of the Royal College of General Practitioners.

**Consultations start from £100 (dependent on GP selection).**

**Saturday appointments are available between 9am and 1pm.**

**Services include:**

- A comprehensive range of medical services, including extended consultation times with each doctor
- Obstetrics shared care, paediatric care, children and adult travel vaccinations and minor surgery
- A rapid and efficient referral service, under one roof
- Home visits and out of hours services, by appointment
- Access to all the back-up facilities of a technologically advanced hospital
- In-house pharmacy

Call now: **0207 432 8269** Email: [privategp@hje.org.uk](mailto:privategp@hje.org.uk)

## Hand & Wrist



**Our Hand & Wrist Clinic is a leading specialist in conditions of the hand and wrist, as well as hand rejuvenation treatment. The clinic provides same day appointments and specialist hand consultants who have a wealth of experience in treating a wide range of conditions.**

The clinic is formed of specialist consultants who can treat almost any condition of the hand and wrist.

Our specialised hand therapy services work closely with our consultants to fully support a patient's recovery.

### Services include:

- Dupuytren's contracture
- Breaks and fractures
- Sprains and strains
- Carpal tunnel syndrome
- Trigger finger
- Tendon injury

Call now: **0207 078 3887** Email: [lhwspecialist@hje.org.uk](mailto:lhwspecialist@hje.org.uk)



## Hernia



**Our Hernia Clinic treats a wide range of hernias. We use the very latest techniques such as mesh free repair, keyhole surgery (laparoscopic) and stitching.**

Unlike other hernia centres, our team of expert consultants includes hernia specialists that dedicate themselves solely to the treatment of hernias. As a result they have unrivalled experience in assessing, diagnosing and treating hernias.

### Hernia types treated:

- Hiatus
- Inguinal
- Umbilical
- Femoral
- Incisional
- Spigelian
- Epigastric

Call now: **0203 370 1014** Email: [londonhernia@hje.org.uk](mailto:londonhernia@hje.org.uk)

## Hip



**Our specialists provide a dedicated service to patients with hip problems. We have a reputation for excellent standards of hip surgery and expertise, supported by superb nursing and physiotherapy specialising in hip conditions. With access to state-of-the-art surgical facilities, the Hip Clinic offers expert diagnosis, intervention and aftercare.**

We are proud of the reputation of our Hip Clinic for conducting minimally invasive hip replacements and for getting patients back to full functionality fast.

### Services include:

- Arthritis
- Fractures & trauma
- Inflammation
- Muscle strains
- Tendonitis

Call now: **0207 078 3811** Email: [londonhipspecialists@hje.org.uk](mailto:londonhipspecialists@hje.org.uk)

## Imaging



**Our cutting-edge digital facilities provide state-of-the-art technology and offer our patients the very best in modern imaging.**

We have a brand-new Imaging Department, which provides us with a full suite of cutting-edge radiology equipment, tailored around bariatric and claustrophobic patients.

### Services include:

- **General radiography:** A full range of plain film skeletal radiography using low dose digital radiography
- **Breast imaging:** Full field digital mammography, breast ultrasound, fine needle aspiration and breast biopsy, breast MRI
- **Digital fluoroscopy:** Barium studies, GI tract, pain management procedures
- **Interventional procedures:** Biopsy, aspiration, drain insertion and pain management procedures under X-ray, ultrasound or CT control
- **Ultrasound scanning:** Routine abdominal and pelvic scans, transrectal prostate scanning, transvaginal pelvic scanning, musculoskeletal scanning, ultrasound guided biopsy, ultrasound pain management/joint injections
- **Non-invasive vascular assessment (Ultrasound):** Venous and arterial assessment of the arms and legs, carotid vessels and aorta using colour doppler ultrasound
- **Magnetic resonance imaging (MRI):** 3 tesla and 1.5 tesla magnet scanners for a wide range of examinations including joint imaging, neuro and spinal imaging, breast imaging, abdominal and pelvic imaging
- **Multislice spiral computerised tomography (CT):** 256 slice CT scanner with a wide range of applications including virtual colonoscopy, CT angiography, specialist cardiac investigations including calcium scoring and cardiac CT angiography, CT urography, PedCat weight bearing CT

Call now: 0207 806 4030 Email: [imaging@hje.org.uk](mailto:imaging@hje.org.uk)



St John & St Elizabeth Hospital



Patient seen for: **Knee Pain** **Arthritis (Knee)**

**Knee Preservation Surgery**



St John & St Elizabeth is my 'go to' hospital. In addition to its clinical excellence and efficiency, I have found it to be a friendly place which appears to be driven by clear, patient-centered values. I think that's the special ingredient.

01/08/2023 - Verified Patient ✓

## Knee



**Our Knee Clinic offers rapid diagnosis, intervention and aftercare for all knee conditions and complaints. The clinic has been the chosen HQ for sporting organisations such as British Athletics, treating and caring for the Team GB Olympic Track & Field athletes.**

### Services include:

- Ligament injuries
- Anterior knee pain
- Patellar instability
- Meniscal tears
- Swollen knee
- Tendonitis

In addition, we offer a variety of treatment options and procedures including knee replacement, arthroscopy and meniscal surgery.

Call now: 0207 432 8328 Email: [londonkneespecialists@hje.org.uk](mailto:londonkneespecialists@hje.org.uk)

## MaxFax



**An expert Maxillofacial Clinic that specialises in oral surgery. This clinic treats a variety of conditions including facial trauma, skin malignancy and temporomandibular joint disorders.**

### Services include:

- Facial trauma
- Facial deformity
- Skin malignancy
- Salivary gland surgery
- Dentoalveolar surgery
- Wisdom tooth surgery
- Temporomandibular joint disorders (TMJ)
- Rhinoplasty
- Genioplasty
- Facial disproportion correction surgery
- Eyelid rejuvenation
- Facelifts
- Reconstructive facial surgery
- Ageing face surgery

Call now: **0207 078 3845** Email: [maxfaxlondon@hje.org.uk](mailto:maxfaxlondon@hje.org.uk)

## Paediatric



**Our Paediatric Clinic is a well-established service offering unsurpassed levels of care.**

We are staffed by experienced, qualified paediatricians and paediatric nurses from 8am - 8pm Monday to Friday.

The clinic provides specialist paediatric healthcare services to children up to age 16. We care for a wide range of conditions and illnesses and are happy to accept patients at short notice.

Our paediatric service ensures a supportive, secure and child friendly environment, with expert help from experienced specialists in baby and paediatric health.

Call now: **0207 078 3831** Email: [paediatrics@hje.org.uk](mailto:paediatrics@hje.org.uk)



St John & St Elizabeth Hospital



Patient seen for: **Breast Cancer** **Breast Surgery**

**Axillary Clearance**



All the doctors, nurses and staff members were very professional, experienced, welcoming, kind, friendly, patient, supportive, helpful and empathetic. The hospital is modern and hygienic with excellent facilities. My private room and the food were great.

08/08/2023 - Verified Patient



## Respiratory



**One of the most revolutionary and innovative centres in the country, dedicated to diagnosing all respiratory disorders.**

Staffed by some of the finest physiologists and consultants we offer expert care in a calm and caring environment as well as fast and accurate diagnosis using the latest state-of-the-art equipment.

Some of the conditions we assess include asthma, chronic obstructive pulmonary disease, sarcoidosis, interstitial lung disease, sleep disordered breathing and allergy.

### Services include:

- Spirometry
- Full lung function
- Reversibility
- FeNO
- Allergy testing
- Mannitol
- Oxygen assessments
- Sleep studies
- CPEX – Cardio-pulmonary exercise testing

Call now: **0207 078 3819** Email: [respiratory@hje.org.uk](mailto:respiratory@hje.org.uk)



St John & St Elizabeth Hospital



Patient seen for: **Sciatica** **Back Pain** **Lower Back Pain**



My experience with St John & St Elizabeth Hospital is world class from the moment you enter the building to the moment you leave. The staff are so helpful and pleasant as well as polite. Everyone is there to help make your experience as stress free as possible.

31/07/2023 - Verified Patient ✓



St John & St Elizabeth Hospital



Patient seen for: **Chest Infection**

**Blood Testing and Results Interpretation**



The atmosphere of expert care and healing is palpable from the minute you enter ‘John and Lizzie’s’.

01/08/2023 - Verified Patient ✓

## Shoulder

**The Shoulder Clinic offers rapid diagnosis, intervention and aftercare, and has an international reputation for exemplary treatment of all shoulder and elbow problems.**

Common conditions and procedures treated at the Shoulder Clinic include frozen shoulder, rotator cuff disease, shoulder replacement and arthritis of the elbow and shoulder.

### Services include:

- Arthroscopic surgery
- Reconstructive surgery
- Joint replacement
- Rotator cuff repairs
- Fractures
- Dislocations
- Sports injuries
- Degenerative arthritic conditions

Call now: **0207 806 4004** Email: [shoulderunit@hje.org.uk](mailto:shoulderunit@hje.org.uk)



## Spine



**Our Spine Clinic is a centre for excellence in the diagnosis, intervention and aftercare of all spinal conditions and complaints.**

Our team is led by some of the UK's top spinal surgeons who comprise a multi-disciplinary team, able to treat almost any spinal condition. Conditions treated include sciatica, kyphosis, slipped disc, spinal infection and spinal stenosis.

### Services include:

- Keyhole surgery (MASS)
- Spinal fusion
- Disc replacement
- Keyhole discectomy
- Kyphoplasty & vertebroplasty
- Balloon kyphoplasty
- Lumbar decompression
- Lumbar microdiscectomy
- Spinal stenosis

Call now: **0203 370 1030** Email: [spinespecialists@hje.org.uk](mailto:spinespecialists@hje.org.uk)



## Stroke



**The Stroke Clinic offers a comprehensive service for stroke patients, covering stroke care and rehabilitation, physiotherapy, mini strokes and TIAs, neuropsychology, and of course our expert consultants.**

Additionally we cover occupational therapy and speech and language therapy all under one roof.

Our expert consultants work together to provide uninterrupted, coordinated care and our Resident Medical Officers provide 24-hour on-site medical cover.

### Services include:

- Initial care
- Rehabilitation following a stroke
- Investigation of TIA

Call now: **0207 806 4075** Email: [stroke@hje.org.uk](mailto:stroke@hje.org.uk)



St John & St Elizabeth Hospital



Patient seen for: **Hand Surgery** **Dupuytren's Fasciectomy**



From initial consultation to the procedure as a day patient my experience was excellent. The staff are professional but friendly. They go the extra mile to show that they realise that you are not just a patient but a human being .

07/08/2023 - **Verified Patient** ✓

## Therapies



Whether patients are struggling with back pain, recovering from sports injuries, experiencing dizziness, or facing speech issues, our dedicated team of expert specialists is here to provide tailored solutions for their needs.

### Services include:

- Musculoskeletal Physiotherapy: Targeting bone, muscle, and joint concerns
- Sports Physiotherapy: Optimizing athletic performance and aiding in injury recovery.
- Hand Therapy: Restoring function and mobility to the hands.
- Shockwave Therapy: An innovative approach to pain management and tissue repair.
- Vestibular Rehabilitation: Addressing balance and inner ear issues.
- Rehabilitation: Tailored programs to support recovery e.g. stroke, orthopaedic or general.
- Occupational Therapy: Helping patients regain independence in daily life.
- Post-natal Assessments: Supporting new mothers in their postpartum journey.
- Pelvic Health Physiotherapy: Specialised care for pelvic concerns.
- Chest Physiotherapy: Enhancing respiratory health and lung function.
- Speech and Language Therapy: Assisting with speech or swallowing difficulties.
- Dietetics: Offering tailored nutritional support and guidance

Call now: **0207 806 4010** Email: [physiotherapy@hje.org.uk](mailto:physiotherapy@hje.org.uk)



## Urology



Our urology services offer ultimate standards of care to our patients. Our highly-skilled group of Urologists all work at London teaching hospitals and are leading specialists in their field.

Appointments are offered to patients within 24 hours and we have clinics available every day of the week. We are always happy to arrange last minute appointments and have a 24-hour on-call emergency service.

Our consultants have the latest diagnostic equipment at their disposal for patients, who can enjoy the unique, family atmosphere of the hospital in comfortable surroundings.

### Services include:

- Andrology
- Bladder and pelvic pain
- Incontinence
- Vasectomy reversal
- Erectile dysfunction
- Peyronie's disease
- Hydrocele
- Kidney stones
- Varicocele
- Interstitial cystitis
- Benign prostate enlargement

Call now: **0207 432 8297** Email: [londonurology@hje.org.uk](mailto:londonurology@hje.org.uk)

## Varicose Vein



The Varicose Vein Clinic is a specialist service headed up by some of the UK's leading consultants. The clinic has a full network of specialist nursing and medical support on hand to help patients with any issue.

All of our patients are cared for by our specialist staff and practitioners who utilise their expert knowledge and advanced techniques to treat all types of varicose vein conditions.

### Services include:

- Surgery
- Injection
- Compression
- Laser ablation (EVLT)

Call now: **0203 370 1029** Email: [varicosevein@hje.org.uk](mailto:varicosevein@hje.org.uk)

# Consultant directory

## Consultant Directory List of Specialities:

- |                          |                                |
|--------------------------|--------------------------------|
| Breast                   | Orthopaedics: Foot & Ankle     |
| Cardiology               | Orthopaedics: Hand & Wrist     |
| Clinical Neurophysiology | Orthopaedics: Hip & Knee       |
| Colorectal & GI          | Orthopaedics: Shoulder & Elbow |
| Dermatology              | Neurology                      |
| ENT                      | Pain Management                |
| Endocrinology            | Paediatrics                    |
| Gastroenterology         | Plastic Surgery                |
| General Medicine         | Psychiatry                     |
| General Surgery          | Respiratory                    |
| Private GP               | Rheumatology                   |
| Gynaecology              | Orthopaedics: Spine            |
| Hernia                   | Stroke                         |
| Haematology              | Urology                        |
| Immunology and Allergy   | Vascular Surgery               |
| Maxillofacial Surgery    |                                |
| Nephrology               |                                |
| Neurology                |                                |
| Neurosurgery             |                                |
| Ophthalmology            |                                |

## Breast

**Mr Muhamed Al-Dubaisi**  
MBChB FRCS DGS

**Consultant Breast Surgeon**

E brigitte.ryan@spirehealthcare.com

T 0208 901 5539

**Special Interests** Benign and malignant breast disease.

**Adult/Paediatric A**



**Mr Arunmoy Chakravorty**

Hon Clinical Senior Lecturer, Imperial College London

**Consultant Oncoplastic and Cosmetic Breast Surgeon**

E secretary@breastservices.co.uk

T 0189 571 7891

**Secretary** Joanna Pearson

**Special Interests** One stop clinics, breast pain management, breast genetics and risk reduction surgery, breast cancer, oncoplastic surgery, perforator flaps and more.

**Adult/Paediatric A**



**Miss Jasdeep Gahir**

MB ChB. MRCS FRCS

**Consultant Oncoplastic Breast and General Surgeon**

E secretary@jasdeepgahir.com

T 0203 478 7377

**Secretary** Carol

**Special Interests** One stop clinics for breast pain, lumps, nipple discharge, genetics-risk reducing surgery, breast screening, benign breast conditions, breast infection, breast reconstruction-breast conserving, mastectomy with reconstruction and more (see website)

**Adult/Paediatric A**



**Mr Neil Johns**

MBBS MD FRCS

**Consultant Oncoplastic and Reconstructive Breast Surgeon**

E suedear@nhs.net

T 0739 947 6136

**Secretary** Kate Corcoran

**Special Interests** Breast surgery, breast lumps, breast pain, breast cancer, nipple discharge, family history of breast cancer, breast infection, breast reconstruction, benign breast conditions, breast surgery, oncoplastic breast surgery, risk reducing surgery.

**Adult/Paediatric A**



**Mrs Jacqueline Lewis**

FRCS (Glasg) FRCS (Plast)

**Consultant Oncoplastic Surgeon**

E hello@drjacquelinelewis.com

T 0203 370 1041

**Special Interests** Breast cancer conservation surgery & reconstruction, mastectomy & reconstruction (implants, pedicled flaps, nipple areola reconstruction including tattoo), axillary node surgery, sentinel node biopsy, benign breast conditions, breast screening, cosmetic breast surgery.

**Adult/Paediatric A**



**Miss Cheryl Lobo**

BSc(Hons) MBBS(Hons) FRCS

**Consultant Breast and Oncoplastic Surgeon**

E enquiries@wellbreast.co.uk

T 07500 963963

**Special Interests** Early detection of breast cancer; Breast screening; Breast conservation; Mastectomy with immediate reconstruction and symmetrisation; Neo adjuvant strategies; Benign breast disease- Breast pain and Breast lump; Family history of breast cancer; Risk reduction surgery; Breast infection- lactational and granulomatous mastitis; Breast sarcoma; Angiosarcoma- primary and radiation induced; Phyllodes- benign, borderline and malignant

**Adult/Paediatric A**



**Mr Peng Tan**

MBBS MSC MRSC DIC PHD MD  
FRCS (GEN SURG)

**Consultant Oncoplastic Breast Surgeon**

E peng.tan@nhs.net

T 0203 370 1041

**Special Interests** Breast lump investigation, single-dose intraoperative radiotherapy (SD-IORT) for early stage breast cancer, sentinel lymph node biopsy and lymph node removal, breast lump removal, breast reconstruction following mastectomy, and more.

**Adult/Paediatric A**



**Professor Jayant S Vaidya**

MBBS MS DNB FRCS PhD

**Consultant Breast Surgeon**

E profvaidya.pa@londonbreastcancer.com

T 0730 644 4066

**Secretary** Shona Brogan

**Special Interests** Breast cancer, diagnosis, lumpectomy, mastectomy, sentinel node biopsy, intraoperative radiotherapy.

**Adult/Paediatric A**



# Cardiology

**Professor Roby Rakhit**  
BSc MD FRCP FESC  
**Consultant Interventional  
Cardiologist**

E info@robyrakhit.co.uk  
T 0203 370 1003

**Secretary** Caroline Kuzmanovic

**Special Interests** General and interventional cardiology.

**Adult/Paediatric** A



**Dr Shankar Sridharan**  
MBBS BSc MRCPCH CCST  
**Paediatric Cardiologist**

E appointments@kidscardiologist.com  
T 0742 813 3489

**Special Interests** Heart murmurs in children, structural heart disease, child chest pain, congenital heart disease in children, echocardiography.

**Adult/Paediatric** P



# Colorectal & GI

**Mr Panagiotis Drymoussis**  
**Consultant General Surgeon**

E drymoussissecretary@gmail.com  
T 0741 541 0632

**Secretary** Charlotte Burford

**Special Interests** Laparoscopic and upper gastrointestinal surgery, hernia surgery (mesh and no mesh repairs), gallbladder surgery, dyspepsia, acid reflux, emergency surgery and day case surgery.

**Adult/Paediatric** A



**Mr Lee Dvorkin**  
MBChB MD FRCS  
**Consultant Laparoscopic  
and General Surgeon**

E Jayne.broccolo@bmihealthcare.co.uk  
T 0786 749 1761

**Secretary** Jayne Broccolo

**Special Interests** All aspects of benign and malignant colorectal pathology, hernias, gallstones, colonoscopy and OGD, skin lesions, bowel cancer screening, IBS.

**Adult/Paediatric** A



**Dr Carol Jane Whelan**  
MB ChB MD FRCP FESC  
**Consultant Cardiologist**

E cardiology@hje.org.uk  
T 0207 806 4080

**Special Interests** Coronary artery disease, heart failure, valvular heart disease, stress echocardiography, transoesophageal echocardiography, cardiac amyloidosis.

**Adult/Paediatric** A



**Mr Majid Hashemi**  
MB ChB FRCS (Gen)  
**Consultant Upper GI and  
Bariatric Surgeon**

E patomrhashemi@hje.org.uk  
T 0780 974 2339, 0207 432 8260

**Special Interests** Anti-reflux surgery, hernia repair, bariatrics, upper GI.

**Adult/Paediatric** A



**Mr Asif Haq**  
MBBCh BAO NUI LRCP SI FRCS  
**Consultant Colorectal Surgeon**

E pa.haq@hcahealthcare.co.uk  
T 0203 794 4690

**Secretary** Rona Call

**Special Interests** Laparoscopic colorectal surgery for bowel cancer, diverticular disease, IBD, haemorrhoids, anal fistulae, rectal prolapse and pilonidal disease. Minimal access hernia repairs, colonoscopies, revision surgery.

**Adult/Paediatric** A



**Professor Patrick Kennedy**  
MB BCH BAO BMEDSCI FRCP MD  
**Consultant Hepatologist  
and Gastroenterologist**

E kennedyptf@gmail.com  
T 0777 160 0807

**Secretary** Maria

**Special Interests** Reader in hepatology, consultant gastroenterologist and hepatologist. Fibroscan, alcohol, fatty and viral liver disease. Abdominal and gallstone pain. Endoscopy and ECRP.

**Adult/Paediatric** A



**Mr Martin Kurzer**  
FRCS  
**Consultant Surgeon**

E martin.kurzer@hje.org.uk /  
secretary@martinkurzer.com

T 0203 370 1014

**Secretary** Emma

**Special Interests** Hernia surgery.

**Adult/Paediatric** A



# Clinical Neurophysiology

**Dr Carla Cordivari**  
FRCP  
**Consultant in Clinical  
Neurophysiology and Neurology**

E carla.cordivari@nhs.net  
T 0796 774 3568

**Special Interests** Specialist in Neurology and Consultant in Clinical Neurophysiology.

**Adult/Paediatric** A



**Dr Anthony Lerman**  
FRCP  
**Consultant Gastroenterologist**

E bailliemedicalchambers@gmail.com  
T 0204 505 2052

**Secretary** Yvonne and Sarah

**Special Interests** Capsule endoscopy, coeliac disease, IBD, IBS; bloating, pain, anaemia; Upper GI: reflux, swallowing problems, indigestion; Lower GI: diarrhoea, constipation, bleeding; unintentional weight loss; OGD and colonoscopy.

**Adult/Paediatric** A



**Dr Sheena Mankodi**  
MBBS BSc MRCP  
**Consultant Gastroenterologist**

E secretary@drankodi.co.uk  
T 0203 435 6922

**Special Interests** Upper GI symptoms, reflux, heartburn, issues with swallowing, lower GI symptoms, bleeding, constipation, bloating and anaemia.

**Adult/Paediatric** A



## Colorectal &amp; GI

**Mr Hasan Mukhtar**  
FRCS  
**Consultant General and Colorectal Surgeon**

E info@woolastonhouse.com  
T 0208 341 3422

**Secretary** Deborah Vandeeper

**Special Interests** General and colorectal surgery.

**Adult/Paediatric** A

**Mr Romi Navaratnam**  
MSc MS FRCS  
**Consultant Hernia and GI Surgeon**

E rashika.halai@hje.org.uk  
T 0207 078 3832

**Secretary** Rashika

**Special Interests** Colonoscopy (bowel cancer concerns) and endoscopy. Common peri anal conditions, including rectal bleeding, haemorrhoids. Laparoscopic surgery for gallbladder, herniae and colorectal cancer, hernia surgery, sports hernia and gilmore's groin.

**Adult/Paediatric** A

**Dr Deepak Suri**  
BSc MD FRCP  
**Consultant Gastroenterologist**

E bailliemedicalchambers@gmail.com  
T: 0204 505 2052

**Secretary** Yvonne & Sarah

**Special interests:** General gastroenterology and hepatology. Endoscopy, colonoscopy, fibroscan. Dyspepsia, change in bowel habit, rectal bleeding, abnormal liver function tests and fatty liver.

**Adult/Paediatric** A

**Dr Clive Onnie**  
MSc PhD FRCP  
**Consultant Gastroenterologist**

E dronnieoffice@hcaconsultant.co.uk  
T 0208 731 7967

**Secretary** Mozelle Ezekiel

**Special Interests** Functional bowel disorders (IBS), abdominal pain, diarrhoea, constipation, bloating, inflammatory bowel disease (IBD), colitis, Crohn's disease, endoscopic procedures, gastroscopy, colonoscopy.

**Adult/Paediatric** A

**Mr Massimo Varcada**  
MBBS MD FRCS FEBS (Coloproctology)  
**Consultant Colorectal Surgeon**

E mvarcada.practice@nhs.net  
T 0791 480 3818 / 0207 795 0500

**Secretary** Kim Levendale

**Special Interests** General and colorectal surgery. Benign gastrointestinal diseases. IBD and colorectal cancer. Upper and lower GI endoscopy. Proctology (incontinence-Thd haemorrhoidectomy-fissures). AIN screening.

**Adult/Paediatric** A

**Mr Paul Ziprin**  
MB BCh MD FRCS (Gen Surg)  
**Consultant Colorectal, Laparoscopic and General Surgeon**

E bailliemedicalchambers@gmail.com  
T 0204 505 2052

**Special Interests** General and laparoscopic surgery including gallstones and hernias. Aspects of colorectal problems including piles, bowel cancer, inflammatory bowel disease.

**Adult/Paediatric** A

**Dr Roser Vega**  
**Consultant Gastroenterologist**

E secretary@drvega.co.uk  
T 0207 078 3802

**Special Interests** Colon cancer screening, advanced therapeutic of colonic neoplasia, inflammatory bowel disease, coeliac disease.

**Adult/Paediatric** A

**Dr Voi Shim Wong**  
BSc MB ChB MD FRCP  
**Consultant Gastroenterologist**

E deborah@woolastonhouse.com  
T 0208 341 3422

**Secretary** Deborah Vandeeper

**Special Interests** Dyspepsia, IBS, colitis, liver disease, bowel cancer screening, endoscopy, bleeding PR, abdominal pain, change in bowel habits, colitis, abdominal bleeding and flatulence.

**Adult/Paediatric** A



## Dermatology

**Dr Karolina Gholam**  
MBBS MSc FRCPCCH SCEderm  
**Paediatric and Adolescent Dermatology Consultant**

E karolina.gholam@doctors.org.uk  
T 0754 695 2050

**Special Interests** All aspects of paediatric and adolescent skin conditions.

**Adult/Paediatric** P

**Professor Victoria Jolliffe**  
MA (Cantab) FRCP (UK) FRCS(Ed)  
MRCGP SFHEA  
**Consultant Dermatologist**

E dermsecretary@gmail.com  
T 0795 639 3335

**Secretary** Sam Matthew

**Special Interests** Alopecia and all aspects of hair loss. General dermatology, including acne and inflammatory skin disease.

**Adult/Paediatric** A

**Dr Natasha Kapur**  
MBBS BSc FRCP  
**Consultant Dermatologist**

E info@drnatashakapur.com  
T 0203 370 1005

**Secretary** Caroline

**Special Interests** General adult and paediatric dermatology. Photodynamic therapy for pre-malignant and malignant skin conditions.

**Adult/Paediatric** A&P

**Dr Janet Ross**  
FRCP DCH  
**Consultant Dermatologist**

E secretary@drjanetross.co.uk  
T 0207 952 1439

**Special Interests** General dermatology with a special interest in skin cancer.

**Adult/Paediatric** A&P

**Dr David Harris**  
FRCP  
**Consultant Dermatologist**

E secretary@skinmatters.co.uk\*  
T 0207 431 5775

**Special Interests** Acute dermatology rashes, acne and wart therapy, mole surveillance, skin cancer, Mohs surgery, skin lasers, scarring and pigmentation.

**Adult/Paediatric** A&P

\*GP letter required

**Dr Jennifer Jones**  
MBBS BSc MRCP  
**Consultant Dermatologist**

E enquiries@drjinderma.com  
T 0207 305 5670

**Special Interests** Acne, skin cancer, eczema and hair loss.

**Adult/Paediatric** A

**Dr Tabi Leslie**  
BSc (First Class Hons) MBBS (Hons)  
FRCP (London)  
**Consultant Dermatologist**

E office.drtleslie@gmail.com  
T 0207 806 4060

**Special Interests** Acne, eczema, mole checks, skin cancer, rosacea and psoriasis.

**Adult/Paediatric** A

**Dr Edward Seaton**  
MA DM MRCP (Lon)  
**Consultant Dermatologist and Micrographic Surgeon**

E rayna@kmsprofessionals.co.uk  
T 0203 283 8788

**Secretary** Rayna

**Special Interests** Dermatology, cutaneous and MOHS micrographic surgery.

**Adult/Paediatric** A



## Dermatology

**Professor Jane Setterfield**

Honorary Consultant

**Professor of Oral and Dermatological Medicine**

E profsetterfield@outlook.com

T 0750 365 5491

**Secretary** Catherine Azzopardi**Special Interests** General dermatology including acne, eczema, psoriasis, pigmented lesions and skin cancers, blistering disorders, oral and mucocutaneous diseases and vulval skin disorders.**Adult/Paediatric** A

## Ear, Nose &amp; Throat

**Mr Jahangir Ahmed**

MA (Cantab) PhD FRCS (ORL-HNS) DO-HNS PGC-Med

**Consultant ENT Surgeon**

E office@ent-london.co.uk

T 0208 226 4066

**Secretary** Melody Taylor**Special Interests** Head, neck and thyroid lumps and tumours. Laryngology, snoring and obstructive sleep apnoea and sino-nasal disorders. Skilled in transoral laser, robotic surgery and endoscopic sinus surgery.**Adult/Paediatric** A&P**Professor Paul Chatrath**

MA(Cantab) MD(London) FRCS(ORL-HNS)

**Consultant ENT Surgeon and Rhinologist**

E contact@london-ent.co.uk

T 0203 865 7225

**Special Interests** Rhinology, sinus surgery, rhinoplasty, nasal valve surgery including titanium implants and reconstruction. Balloon sinuplasty, nasal polyps, pinnoplasty including minimally invasive approaches, snoring, paediatric ENT conditions, tonsillectomy and glue ear.**Adult/Paediatric** A&P**Mr Nicholas Eynon-Lewis**

MB BS BSc FRCS (ORL-HNS)

**Consultant ENT Surgeon and Rhinologist**

E sam@EynonENT.com

T 0207 806 4034

**Secretary** Samantha**Special Interests** Nose and sinus problems. Rhinoplasty and voice.**Adult/Paediatric** A&P**Mr Jonathan Fishman**

BM BCh (Oxon) BA (Hons) MA (Cantab) PhD MRCS (Eng) DOHNS FHEA FRCS (ORL-HNS)

**Consultant ENT Surgeon**

E info@londonentgroup.co.uk

T 0788 185 5961

**Secretary** Wendy**Special Interests** All aspects of adult and paediatric ear, nose and throat disorders.**Adult/Paediatric** A&P

## Ear, Nose &amp; Throat

**Mr Ravinder Singh Natt**

BSc (Immunology) MBBS MRCS DO-HNS FRCS (ORL-HNS)

**Consultant ENT, Head and Neck Surgeon**

E marydhiya.joseph@nhs.net

T 0751 853 0406

**Secretary** Mary Joseph**Special Interests** All aspects of adult and paediatric ENT disorders. Specialist interest in sino-nasal conditions and facial aesthetics with completion of advanced competitive fellowships.**Adult/Paediatric** A&P**Professor Neil Tolley**

MD FRCS DLO

**Consultant ENT Surgeon**

E toley.secretary@gmail.com

T 0207 286 8663

**Secretary** Vicki Owen**Special Interests** General ENT, thyroid parathyroid and head & neck surgery. Paediatric ENT.**Adult/Paediatric** A&P**Mr Abhi Parikh**

PhD (London) FRCS (ORL-HNS) MS (ENT)

**Consultant ENT Surgeon**

E londonentconsultant@gmail.com

T 0207 224 2455

**Secretary** Kjai Kanone**Special Interests** Middle ear surgery for hearing loss, cholesteatoma, ear drum perforation and otosclerosis. Surgery for sinusitis and nasal polyps.**Adult/Paediatric** A&P

## Endocrinology

**Dr Eric Lever****Consultant Endocrinologist**

T 020 7806 4000

**Special Interests** Diabetes, including diabetes mellitus; Thyroid disorders / surgery; Endocrinology for infertility**Adult/Paediatric** A**Dr Ayesha Siddiqi**

PhD FRCP

**Consultant Endocrinologist**

E asendocrine@gmail.com

T 0793 173 8203

**Secretary** Angela Porter**Special Interests** Thyroid, pcos, diabetes, adrenal, pituitary, calcium disorders.**Adult/Paediatric** A

## General Medicine

**Dr Anupam Bhattacharjee**

BSc PhD MBBS MRCP(UK)

**Consultant Neurologist**

E jane.barber3@nhs.net

T 0770 432 2608

**Special Interests** General neurology, neuromuscular disease including peripheral nerve disease, headache and neuropathic pain, neuro-inflammatory and neuro-immunological disease including ms, blackouts, dizziness and balance disorders, parkinson's disease and other movement disorders.

**Adult/Paediatric A****Dr Huw Lewis Clarke Beynon**

BSc MD FRCP

**Consultant Rheumatologist**

E beynonsecretaries@thephysiciansclinic.co.uk

T 0207 034 8144

**Special Interests** All aspects of general rheumatology, general medicine, sarcoidosis and vasculitis.

**Adult/Paediatric A**

## General Practice

**Dr Leah Austin**

MBBS MRCGP NT Dip AFMCP

**General Practitioner and Nutritional Therapist**

E privategp@hje.org.uk \ pa@londonnutritiondoctor.com

T 0207 432 8269 / 0753 366 0637

**Special Interests** General practice, nutrition, wellwoman/man checks, women's health and hormones, menopause/BHRT, integrative healthcare, gut health and nutrigenomic testing, nutritional and lifestyle assessments.

**Adult/Paediatric A&P****Dr Laura Cullen**

MBBS BSc(Hons.) nMRCGP DFSRH

**General Practitioner**

E privategp@hje.org.uk

T 0207 432 8269

**Special Interests** Diabetes, chronic kidney disease, high blood pressure, cardiovascular disease, family planning, renal medicine, dermatology, and medical education.

**Adult/Paediatric A&P****Dr Sophie Molloy**

MB BCh BAO FRCP MD

**Consultant Neurologist**

E sophie.molloy@nhs.net

T 0207 806 4060

**Secretary** HJE OPD

**Special Interests** Parkinson's disease and neurodegenerative disorders.

**Adult/Paediatric A****Dr Dean Noimark**

FRCP BSc

**Consultant Physician, General and Geriatric Medicine**

E deannoimarkoffice@hcaconsultant.co.uk

T 0774 012 2300

**Special Interests** Acute general medical problems, frailty, falls, dementia, orthogeriatrics and rehabilitation. Pre-operative and post-operative assessment and domiciliary visits.

**Adult/Paediatric A****Dr Eric Dan Goor**

MB BS DCH MRCGP MUHMS

**General Practitioner**

E privategp@hje.org.uk

T 0207 432 8269

**Special Interests** Primary and urgent care, child health, development and vaccinations, ENT and hyperbaric medicine.

**Adult/Paediatric A&P****Dr Nina Ghosh-Chowdhury**

MBChB Medicine BSc Medical Ethics and Law nMRCGP DRCOG DFSRH

**General Practitioner**

E privategp@hje.org.uk

T 0207 432 8269

**Special Interests** Paediatrics, cardiovascular disease, urgent care, wellwoman and wellman checks and medical education.

**Adult/Paediatric A&P****Dr John Philip O'Dwyer**

MA MD FRCP RAMC

**Consultant Neurologist**

E pa@privateneurology.org

T 0774 657 8393

**Secretary** Maggie Butcher

**Special Interests** Epilepsy, headache, strokes, movement disorders and neurology.

**Adult/Paediatric A****Dr Richard G. Rees**

MBBCh FRCP

**Consultant Rheumatologist**

E patodreese@hje.org.uk

T 0203 370 1007

**Secretary** Melanie Sewnath

**Special Interests** All adult rheumatology. Inflammatory arthritis, OA, gout, osteoporosis, joint and soft tissue injections, spinal pain.

**Adult/Paediatric A****Dr Tal Helbitz**

B Med Sci, MD, MRCGP

**General Practitioner**

E info@themedicalspace.co.uk

T 0203 369 3769

**Special Interests** Preventive Medicine, Cardiovascular disease, Hypertension, Diabetes.

**Adult/Paediatric A&P****Dr Daniel Gordon**

BSc MBBS DCH MRCGP

**General Practitioner**

E reception@drdanielgordon.com

T 0203 900 0132

**Special Interests** Acute health issues in adults and children, mental health & wellbeing, preventative health including health screening, chronic disease management, vaccinations.

**Adult/Paediatric A&P****Dr Benjamin Schreiber**

MBBS MA MD FRCP

**Consultant Rheumatologist**

E info@benjischreiber.com

T 0208 458 6775

**Secretary** Katie Cluskey

**Special Interests** General rheumatology, connective tissue diseases, osteoporosis, joint injections and adolescent rheumatology.

**Adult/Paediatric A****Dr Ayesha Siddiqi**

PhD FRCP

**Consultant Endocrinologist**

E asendocrine@gmail.com

T 0793 173 8203

**Secretary** Angela Porter

**Special Interests** Thyroid, pcos, diabetes, adrenal, pituitary, calcium disorders.

**Adult/Paediatric A****Dr Delphine Sekri**

MB MRCGP DFFP (Paris 2005)

**General Practitioner**

E privategp@hje.org.uk

T 0207 432 8269

**Special Interests** Acute issues in adults and children, childhood illnesses, immunisations and regular checks, wellwoman and wellman checks, second opinions, women's health and home visits.

**Adult/Paediatric A&P****Dr Adam Wander**

Bsc MBChB(Edin) MRCGP DRCOG DFFP DOccMed

**General Practitioner**

E privategp@hje.org.uk

T 0207 432 8269

**Special Interests** The full range of general practice issues, both acute and chronic, men's health problems, wellman and wellwoman checks, general medicine, child health, cardiovascular and respiratory disease and has a special interest in dermatology.

**Adult/Paediatric A&P**

## General Surgery

**Mr Obiekezie Agu**  
MBBS MS FRCS FRCS(GEN)  
**Consultant Vascular Surgeon**

E [mragu.secretary@hcahealthcare.co.uk](mailto:mragu.secretary@hcahealthcare.co.uk)  
T 0207 908 3757

Secretary Sabina D'Alessio

**Special Interests** Varicose veins, leg swelling, claudication, leg ulcers, arterial and aortic disease, spine access, major vessel bleeding.

**Adult/Paediatric** A&P



**Professor Vassilios Papalois**  
MD PhD FICS FRCS FEBS  
**Consultant Transplant and General Surgeon**

E [vassilios.papalois@nhs.net](mailto:vassilios.papalois@nhs.net)  
T 0208 383 5165

**Special Interests** Transplantation and general surgery.

**Adult/Paediatric** A



## Gynaecology & Obstetrics

**Mr Joe Aquilina**  
FRCOG MFFP  
**Consultant Obstetrician and Gynaecologist**

E [lynmedisec@aol.com](mailto:lynmedisec@aol.com)  
T 0208 504 5381

Secretary Lyn

**Special Interests** Polycystic ovaries, menstrual disorders, sonohysterography, pelvic pain, feto-maternal medicine.

**Adult/Paediatric** A



**Mr Christian Barnick**  
MBBS FRCOG  
**Consultant Obstetrician and Gynaecologist**

E [barnickpa@gmail.com](mailto:barnickpa@gmail.com)  
T 0790 209 4207

**Special Interests** Obstetrics and gynaecology. Early pregnancy problems and antenatal care and delivery. Wellwoman and sexual health screening. Advanced laparoscopic surgery for fibroids, endometriosis and fertility optimisation. Hormone replacement therapy.

**Adult/Paediatric** A



## Gynaecology & Obstetrics

**Mr Nilesh Agarwal**  
FICOG MRCOG Dip. Laparoscopy  
**Consultant Obstetrician and Gynaecologist**

E [shivnilesh@yahoo.com](mailto:shivnilesh@yahoo.com)  
T 0791 564 7759

**Special Interests** Keyhole surgery (laparoscopy, hysteroscopy), hysterectomy, myomectomy (fibroids), ovarian cyst with ovary preservation, polycystic ovary. Gynaecological emergencies, early pregnancy, miscarriage, ectopic and gynaecological ultrasound. General gynaecology and more.

**Adult/Paediatric** A



**Mr Yinka Akinfenwa**  
MBBS MRCOG  
**Consultant Obstetrician**

E [yinka.akinfenwapa@btinternet.com](mailto:yinka.akinfenwapa@btinternet.com)  
T 0208 504 6462

**Special Interests** General gynaecology, inflammatory diseases of the vulva, vagina, uterus, and pelvic inflammation. Menstrual disorders: abnormal vaginal bleeding, dysmenorrhea, and pre-menstrual dysphoric disorder. Pelvic pain disorders. Early pregnancy, ectopic pregnancy. Obstetrics: High risk obstetrics, general pregnancy care and more.

**Adult/Paediatric** A



**Ms Charlotte Chaliha**  
MA MD FRCOG  
**Consultant Obstetrician and Gynaecologist**

E [drchaliha@gmail.com](mailto:drchaliha@gmail.com)  
T 0750 295 0290

Secretary Ellis Lance & Mary Hodgson

**Special Interests** General gynaecology with special interest in pelvic floor problems such as urinary and faecal incontinence, prolapse, perineal and vaginal pain, postpartum pelvic floor problems and recurrent urinary tract infections.

**Adult/Paediatric** A



**Mr Demetrios Leonidas Economides**  
MBBS MD FRCOG  
**Consultant Obstetrician and Gynaecologist**

E [demetrios.economides@nhs.net](mailto:demetrios.economides@nhs.net)  
T 0207 435 5417

Secretary Paula

**Special Interests** General gynaecology, pregnancy problems, ultrasound, miscarriages, period problems, cysts, fibroids.

**Adult/Paediatric** A



**Miss Fanni Kokka**  
MRCOG RCOG-Certified BSCCP  
**Consultant Gynaecologist and Gynaecological Oncologist**

E [info@woolastonhouse.com](mailto:info@woolastonhouse.com)  
T 0208 341 3422

Secretary Deborah Vandeppeer

**Special Interests** Gynaecology and colposcopy. Gynaecological oncology (treatment of gynaecological malignancies).

**Adult/Paediatric** A



**Mrs Saswati Maitra**  
MBBS FRCOG  
**Consultant Obstetrician and Gynaecologist**

E [secretary@missmaitra.co.uk](mailto:secretary@missmaitra.co.uk)  
T 07444 103 886

Secretary Joanna Pearson

**Special Interests** Gynaecology scanning including 3D gynaecology scanning, early pregnancy problems, recurrent miscarriages, menstrual problems, ovarian cysts, recurrent vaginal infections and more.

**Adult/Paediatric** A



**Dr Hikmet Naoum**  
MSc FRCOG  
**Consultant Gynaecologist**

E [naoum.gynae@hotmail.com](mailto:naoum.gynae@hotmail.com)  
T 0207 224 4244

Secretary Nadine

**Special Interests** Management of abnormal uterine bleeding, emergency gynaecology, well woman screening and treatment of genital warts.

**Adult/Paediatric** A



**Mr Emeka Okaro**  
MBBS FRCOG  
**Consultant Obstetrician and Gynaecologist**

E [justina.airall@hje.org.uk](mailto:justina.airall@hje.org.uk)  
T 0207 078 3894 / 0773 036 8009

Secretary Justina Airall

**Special Interests** Obstetrics and gynaecology, early pregnancy complications, one-stop pelvic pain and menstrual disorders, colposcopy, laparoscopic surgery.

**Adult/Paediatric** A





## Haematology

**Dr Frederick Chen**  
FRCP FRCPATH PhD  
**Consultant Haematologist**

**E** Maureen.Finneran@nhs.net  
**T** 0748 472 8811

**Secretary** Maureen Finneran

**Special Interests** Anaemias and abnormal blood counts, myeloproliferative neoplasia, low grade haematological malignancies, haemato-oncological diagnostics, immunohaematology, ITP, haemolytic anaemias, Iron metabolism disorders, haemochromatosis, iron therapy.

**Adult/Paediatric** A



**Dr Anastasia Chew**  
MBChB MRCP FRCPATH  
**Consultant Haematologist**

**E** amlanisecretary@gmail.com  
**T** 0207 806 4060

**Special Interests** Investigation of abnormal full blood counts, management of iron deficiency anaemia, investigation of abnormal clotting and peri operative anticoagulation management. Investigation and management of malignant haematology (such as chronic lymphocytic leukaemia, chronic myeloid leukaemia).

**Adult/Paediatric** A



## Neurology

**Dr John Philip O'Dwyer**  
MA MD FRCP RAMC  
**Consultant Neurologist**

**E** pa@privateneurology.org  
**T** 0774 657 8393

**Secretary** Maggie Butcher

**Special Interests** Epilepsy, headache, strokes, movement disorders and neurology.

**Adult/Paediatric** A



## Immunology & Allergy

**Dr Sorena Kiani**  
MBPhD FRCP FRCPATH  
**Consultant Immunologist and Allergy Specialist**

**E** dermatologyimmunologycentre@gmail.com  
**T** 0148 355 5907

**Secretary** Caroline Conlon

**Special Interests** Allergy, anaphylaxis, urticaria, angioedema, recurrent infections, immunodeficiency, autoinflammatory and autoimmune diseases.

**Adult/Paediatric** A&P



## Ophthalmology

**Professor Riaz Asaria**  
BM MD FRCOphth  
**Consultant Ophthalmologist and Vitreoretinal Specialist**

**E** info@londoneyecentres.co.uk  
**T** 0207 432 8315 / 0781 681 4338

**Secretary** Etamar Bruno Pinto

**Special Interests** Cataract surgery, eye trauma, macular degeneration treatment, medical and surgical retina and general ophthalmology. Urgent eye care and dry eye.

**Adult/Paediatric** A



**Mr Graham Duguid**  
MD FRCS FRCOphth FRAeS  
**Consultant Ophthalmic Surgeon**

**E** secretary.gduguid@thelondonclinic.co.uk  
**T** 0776 423 2481

**Secretary** Monica Trinanés

**Special Interests** Medical and surgical retina, cataracts.

**Adult/Paediatric** A



## Maxillofacial Surgery Nephrology

**Mr Deepak Komath**  
MD BDS FDS RCS MDS MRCS FRCS(OMFS)  
**Consultant Maxillofacial Surgeon**

**E** maxfaxlondon@hje.org.uk  
**T** 0207 078 3845

**Secretary** Nicky

**Special Interests** Open and keyhole TMJ (jaw joint) surgery, skin cancer management, facial reconstruction, facial trauma, cosmetic facial surgery, advanced dental implants with full restoration of form and function.

**Adult/Paediatric** A&P



**Dr Peter Dupont**  
MB BCh BAO (Hons) LRCSI LRCPI MRCPI DIC PhD FRCP  
**Consultant Nephrologist & UCL Honorary Associate Professor**

**E** pdupont@nhs.net  
**T** 0207 433 8815

**Secretary** Mehjabeen Edah-Tally

**Special Interests** Chronic kidney disease, kidney transplantation.

**Adult/Paediatric** A



**Mr Zine Elhousseini**  
MD FRCOphth  
**Consultant Ophthalmologist**

**E** info@elhousseiniyecare.com name  
**T** 0755 704 0097

**Special Interests** Diabetic eye disease, retina surgery, retinal detachment, medical retina, age related macular degeneration, cataract and refractive laser surgery.

**Adult/Paediatric** A



**Dr Jason Ho**  
MBBS BSc (hons) FRCOphth  
**Consultant Ophthalmologist**

**E** secretary@drjasonho.com  
**T** 0204 509 9800

**Secretary** Katie Sherwood

**Special Interests** Vitreoretinal surgery (retinal detachments, macular holes, epiretinal membranes), cataract surgery, general and emergency ophthalmology).

**Adult/Paediatric** A



# Ophthalmology

## Miss Rajni Jain

FRCOphth  
**Consultant Ophthalmic Surgeon**

E parajinjain@lesp.net  
 T 0796 153 9859

**Secretary** Cris

**Special Interests** General ophthalmology, watery eyes, eyelid and lacrimal surgery, aesthetic eyelid surgery, paediatric ophthalmology.

**Adult/Paediatric** A



## Dr Nick Koutroumanos

MBBS FRCOphth PgC Clin Ed FHEA  
**Consultant Ophthalmologist and Oculoplastic Surgeon**

E info@clinicloop.com  
 T 0204 531 6760 / 0794 464 2152

**Special Interests** Adult and paediatric ophthalmic plastic and reconstructive eyelid, orbital and lacrimal surgery and aesthetic eye surgery.

**Adult/Paediatric** A&P



## Mr Nabeel Malik

FRCOphth FRCSEd (Ophth)  
**Consultant Ophthalmic and Oculoplastic Surgeon**

E pa@oleloclinic.com  
 T 020 7459 4177

**Secretary** Gillian Croucher

**Special Interests** Medical retina including age related macular degeneration, diabetic eye disease, inflammatory eye disease and HIV. Retinal laser and intravitreal eye injections. Cataract surgery including multifocal lens implantation for the correction of short and long sight - and more.

**Adult/Paediatric** A



## Mr Richard Scawn

MBBS FRCOphth  
**Consultant Oculoplastic and Ophthalmic Surgeon**

E pa@richardscawn.com  
 T 0203 538 7199

**Secretary** Anna Williams

**Special Interests** Watery eyes, dry eyes, blepharitis, droopy eyelids, eyelid cancers, entropion, ectropion, conjunctivitis, chalazion, cyst, thyroid eye disease, Botox and cosmetic surgery.

**Adult/Paediatric** A



## Mrs Sabrina Shah-Desai

MS FRCS (Ed)  
**Consultant Aesthetic Oculoplastic Surgeon**

E secretary@perfecteyesltd.com  
 T 0795 202 8397 / 0207 183 5121

**Special Interests:** Aesthetic eyelid surgery (upper & lower lid blepharoplasty/eyelid lift/eye-bag surgery), asian eyelid surgery, droopy eyelid (ptosis) surgery, revision eyelid surgery, eyelid cancer reconstruction, ectropion & entropion. Non-surgical facial rejuvenation with fillers, botox & energy-based treatments.

**Adult/Paediatric:** A



## Mr Robbie Walker

MA(Oxon) MBBS FRCOphth  
**Consultant Ophthalmic Surgeon**

E rw@eyesurgeongroup.co.uk  
 pa@eyesurgeongroup.co.uk  
 T 0203 096 5843

**Secretary** Lisa

**Special Interests** Vitreoretinal surgery, macular hole, epiretinal membrane, retinal detachment, dislocated lens, diabetic complications, cataract surgery and emergency eye complaints.

**Adult/Paediatric** A



## Mr Laurence Whitefield

MB BS Lond FRCOphth  
**Consultant Ophthalmic Surgeon**

E paula@pmmss.co.uk  
 T 0208 017 2711

**Special Interests** Small incision cataract surgery, use of aspheric, toric and multifocal intraocular lenses. Retinal diseases including diabetic retinopathy, age related macular degeneration and retinal vascular disease. Retinal laser and intraocular therapeutic injections, glaucoma, general ophthalmology.

**Adult/Paediatric** A



## Mr Hadi Zambarakji

MBChB FRCOphth D.M  
**Consultant Ophthalmologist**

E info@retinacare.org.uk  
 T 0794 757 8480

**Special Interests** Ophthalmology, including vitreoretinal and cataract surgery, medical retina.

**Adult/Paediatric** A



# Orthopaedics ( Foot & Ankle)

## Mr Mark Davies

BA (Oxon) MBBS FRCS (Orth)  
**Consultant Orthopaedic Surgeon**

E enquiries@tfac.co.uk  
 T 0207 078 3800

**Special Interests** Mark Davies, founder of London Foot and Ankle Centre, is a leading expert in foot and ankle surgery and is respected worldwide. All aspects of foot and ankle surgery favouring non-operative treatments whenever possible.

**Adult/Paediatric** A



## Mr James Davis

BSc MBBS FRCS (Tr&Orth)  
**Consultant Orthopaedic Surgeon**

E enquiries@tfac.co.uk  
 T 0207 078 3800

**Special Interests** All disorders of the adult foot and ankle, bunions, mid and hindfoot arthritis including ankle replacements and complex deformities. Immediate past president of the British Orthopaedic Foot and Ankle Society.

**Adult/Paediatric** A



## Mr Matthew Solan

FRCS(Tr&Orth)  
**Consultant Orthopaedic Surgeon**

E enquiries@tfac.co.uk  
 T 0207 078 3800

**Special Interests** Foot and ankle complaints in adults and children. He has a particular interest in the treatment of stubborn heel pain. He established and runs the UK's first 'One-Stop' clinic for LFAC for heel and ankle problems such as ankle tendonitis and plantar fasciitis.

**Adult/Paediatric** A&P



## Mr Martin Klinke

MD DR  
**Consultant Orthopaedic Surgeon (Foot and Ankle Specialist)**

E phyllis@tfac.co.uk  
 T 0207 403 4162

**Secretary** Phyllis

**Special Interests** Sports injuries to foot and ankle, achilles tendon problems, ankle joint replacement, ligament injuries, hallux valgus, flat foot, second opinion and plantar fasciitis.

**Adult/Paediatric** A



## Mr Aria Ghassemi

MBBS MRCS FRCS MSc. Dip (Imperial College)  
**Consultant Orthopaedic Surgeon**

E ghassemi.admin@sportsortho.co.uk  
 T 0207 496 3550

**Secretary** George

**Special Interests** All foot and ankle complaints.

**Adult/Paediatric** A&P



## Professor Mark Tagoe

BSc(Hons) MSc FCPodS  
**Consultant Podiatric Surgeon**

E sara@thetagoecolinc.co.uk  
 T 0333 800 4101

**Secretary:** Sara Desmore

**Special interests:** Foot and ankle surgery along with lower limb sports injuries and diabetic limb salvage.

**Adult/Paediatric** A



## Orthopaedics (Hand &amp; Wrist)

**Mr Michael Elvey**

MBBS BSc FRCS (Tr &amp; Orth) Br Dip Hand Surg

**Consultant Hand and Orthopaedic Surgeon**

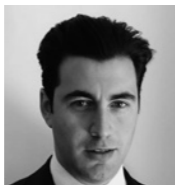
E secretary@michaelvelvey.com

T 0203 917 6928

Secretary Aimee Howarth

Special Interests Orthopaedic hand and upper limb surgery.

Adult/Paediatric A&amp;P

**Mr Maxim Horwitz**

MBChB FRCS (Orth) DipHandSurg

**Consultant Hand and Orthopaedic Surgeon**

E info@thehanddoctor.co.uk

T 0208 150 8290

Secretary Karen, Jahlan and Shifra

Special Interests Children: Common paediatric hand and wrist trauma. Congenital hand surgery. The treatment of hands in people with cerebral palsy, brain and spinal cord injury. Adults: Hand and upper limb trauma and more.

Adult/Paediatric A&amp;P

**Mr Alistair Hunter**MA MBBS MSc FRCS (Tr&Orth) FHEA  
Dip Hand Surg**Consultant Orthopaedic Surgeon**

E office@alistairhunter.com

T 0207 043 2708

Secretary Hiba Khan

Special Interests All hand, wrist and elbow conditions, including fractures, carpal tunnel syndrome, trigger finger, arthritis, sports injuries and Dupuytren's.

Adult/Paediatric A&amp;P

**Mr Daniel Shaerf**

MBBS BSc MRCS FRCS(Tr&amp;Orth)

**Consultant Hand and Orthopaedic Surgeon**

E info@thehanddoctor.co.uk

T 0208 150 8290

Secretary Karen, Jahlan and Shifra

Special Interests All conditions of the hand and wrist, including trauma (fractures of the forearm, wrist, scaphoid, hand), ligament injuries and skier's thumb. Nerve entrapments, open/endoscopic carpal tunnel release and more.

Adult/Paediatric A&amp;P

**Mr Elliot Sorene**

MBBS FRCS (Tr and Orth) EDHS

**Consultant Hand and Upper Limb Surgeon**E ali@londonhand.com  
sophie@londonhand.com

T 0207 078 3869, 0203 701 1700

Secretary Alzira Whelan-Cruz &amp; Sophie Revan

Special Interests Hand, wrist and elbow surgery, trauma and elective in both adults and children. Arthritis surgery, joint replacements, arthroscopic surgery and reconstruction surgery.

Adult/Paediatric A&amp;P



## Orthopaedics (Hip &amp; Knee)

**Mr Ghias Bhattee**

MBBS MRCS FRCS (Tr&amp;Orth)

**Consultant Orthopaedic Surgeon**

E londonkneeconsultant@gmail.com

T 0192 328 6337

Secretary Jane Peach

Special Interests All aspects of knee surgery including sports ligament and arthroscopic surgery (primary to revision) and realignment osteotomy. Primary to revision knee replacement and primary hip replacement.

Adult/Paediatric A

**Professor Damian Griffin**OBE MBM BCH (OXON) MA MPHIL (CANTAB)  
FRCS (TR&ORTH)**Professor of Trauma and Orthopaedic Surgery**

E emma@hiparthroscopyclinic.co.uk

T 01926 403529

Secretary Emma Whitely

Special Interests Hip preservation; Complex hip problems; Femoro-acetabular impingement; FAI; Peri-acetabular osteotomy; PAO; Surgical dislocation and reshaping; Hip arthroscopy; Hip replacement surgery; Hip disorders; Ligamentum teres;

Adult/Paediatric A

**Mr Chinmay Gupte**

PhD FRCS(Tr&amp;Orth) MA, BMBCh (Oxon)

**Consultant Orthopaedic Surgeon (Knee)**

E alice.smith@hcahealthcare.co.uk

T 0203 488 2488 / 0207 483 5160

Secretary Alice Smith

Special Interests Children's and adult knee surgery. Sports knee injuries, knee arthritis surgery, cruciate ligament injury and reconstruction, meniscal repair, patellofemoral/kneecap instability and chondral replacement surgery.

Adult/Paediatric A&amp;P

**Mr Parag Kumar Jaiswal**

BSc MBBS MRCS MD(Res) FRCS(Tr&amp;Orth)

**Consultant Trauma and Orthopaedic Surgeon**

E admin@londonhipknee.co.uk

T 0730 680 1948 / 0207 459 4482

Secretary Terri Halford

Special Interests All aspects of hip and knee problems. A special interest in joint preservation techniques to manage young adult hip and knee pain and minimally invasive hip and knee replacements and revision surgery. Complex trauma in the leg and sports injuries.

Adult/Paediatric A&amp;P

**Mr Amer Khan**

BSc(Hons) MBBS FRCS FRCS(Tr&amp;Orth)

**Consultant Orthopaedic Surgeon**

E amer.khan@hotmail.co.uk

T 0207 394 6614

Secretary Jess

Special Interests Knee surgery, sports injuries, arthroscopic, ACL, meniscus, cartilage, arthritis, replacement. Shoulder surgery, sports injuries, instability, arthritis and frozen shoulder. Joint preservation surgery, non-surgical management, meniscus transplantation and complex revision knee surgery.

Adult/Paediatric A

**Mr Sujith Konan**MBBS MD(res) MRCS FRCS(Tr&Orth), Honorary  
Associate Professor (UCLH)**Consultant Orthopaedic Surgeon**

E patomrkonan@gmail.com

T 0203 763 7082, 0795 688 4528

Secretary Emma Selby

Special Interests Hip and knee arthroplasty, revision surgery and sports surgery.

Adult/Paediatric A&amp;P

**Mr Alex Liddle**

MBBS DPhil FRCS(Orth)

**Consultant Orthopaedic Surgeon**

E mksurgeons@kingedwardvii.co.uk

T 0207 467 3925

Secretary Sue Dunlop &amp; Felicity Hillman

Special Interests Knee and hip surgery, specialising in arthroscopic knee surgery, partial, primary and revision knee replacement and primary and revision hip replacement.

Adult/Paediatric A

**Mr Nimalan Maruthinar**

BSc (Hons) MBBS FRCS(Tr&amp;Orth)

**Consultant Trauma and Orthopaedic Surgeon**

E osteoid@btinternet.com

T 0787 126 9062

Secretary Maree Bowring

Special Interests General orthopaedics and trauma, hip replacement, knee replacement, revision joint replacement and soft tissue knee surgery. Special interest in lysosomal storage disorders and lowe syndrome.

Adult/Paediatric A



## Orthopaedics (Hip & Knee)

**Mr Satyajit Naique**  
MS Orth FCPS-Orth Dip.Orth  
**Consultant Orthopaedic Surgeon**  
E secretary@privatemedicalmanagement.com  
T 0124 524 1347



**Secretary** Francesca  
**Special Interests** Hip and knee arthroplasty, complex trauma, limb reconstruction and lengthening. Robotic guided (Navio) knee replacements, open fractures, bone infections, failed fixations and non-union surgery. Circular external fixation (Ilizarov), bone loss managements, deformity correction and more.

**Adult/Paediatric** A

**Mr Harold Nwaboku**  
MBBS FRCSed FRCSeng FRCS (Tr & Orth)  
**Consultant Orthopaedic Surgeon**  
E pa@totalorth.com  
T 0208 341 3422



**Special Interests** Preservation treatments for hip & knee arthritis, stem cell and prp treatments for hip disorders, arthroscopy, replacement, revision replacement, trauma. Preservation treatments for knee arthritis, ACL reconstruction, meniscus repair or resection and more

**Adult/Paediatric** A

**Mr Akash Patel**  
BSc (Hons) MBBS MRCS MSc FRCS (Tr and Orth), Associate Professor (UCL)  
**Consultant Sport, Trauma and Orthopaedic Surgeon**  
E info@londonexpertorthopaedics.com  
T 0203 995 5463, 0777 581 4925



**Secretary** Lydia Cronin  
**Special Interests** Hip, knee and sports surgery. Hip and knee injections, arthroscopy and replacement. Knee ligament reconstruction.

**Adult/Paediatric** A&P

**Mr Joyti Saksena**  
BMSc (Hons) MBChB MRCS FRCS (Tr & Orth)  
**Consultant Hip, Knee and Sports Surgeon**  
E pa@totalorth.com  
T 0208 341 3422



**Special Interests** All conditions of the hip and knee, lower limb sports injuries.

**Adult/Paediatric** A&P

**Mr Ian Sinha**  
MBBS BSc Hons DIPSEM FRCS (Tr&Orth)  
**Consultant Trauma and Orthopaedic Surgeon**  
E contact@otlclinic.co.uk  
T 0207 867 3747 / 0743 257 2000



**Special Interests** Complex orthopaedic fractures, limb reconstruction (circular frames, bone transport, masquetelet technique), rib fracture fixation, computer navigated knee replacement, knee ligament reconstruction (anterior cruciate ligament reconstruction (acl) and more

**Adult/Paediatric** A&P

**Mr Robin Strachan**  
BSc Hons Physiol MB ChB FRCS Ed  
**Consultant Orthopaedic Surgeon**  
E londonkneespecialists@hje.org.uk / rksprpt@gmail.com  
T 0207 432 8328



**Special Interests** Osteoarthritis of knee, total knee replacement, patellofemoral knee replacement and revision knee replacement, traumatic knee conditions, meniscal problems and repair, inflammatory synovitis and synovectomy, chondromalacia, tendonitis in the knee and patellar maltracking.

**Adult/Paediatric** A

**Mr James Youngman**  
MBBS FRCS (Orth)  
**Consultant Trauma and Orthopaedic Surgeon**  
E youngman.james@googlemail.com  
T 0207 432 8337



**Secretary** Minel Stennett  
**Special Interests** Trauma, foot and ankle, hip and knee surgery, sports injuries and deformity correction.

**Adult/Paediatric** A&P

## Orthopaedics (Shoulder & Elbow)

**Mr Raymond Anakwe**  
MB ChB DMCC FRCS Ed(Tr&Orth) RAMC  
**Consultant Trauma and Orthopaedic Surgeon**  
E pa.raymondanakwe@gmail.com  
T 0790 369 9135



**Special Interests** Upper limb trauma, hands, wrists and elbows.

**Adult/Paediatric** A&P

**Mr Toby Baring**  
MBBS MRCS MD(RES) FRCS (Tr & Orth)  
**Consultant Trauma and Orthopaedic Surgeon**  
E londonshouldersurgeon@gmail.com  
T 0756 181 2682



**Secretary** Julia Drummond

**Special Interests** Shoulder and elbow surgery, general trauma.

**Adult/Paediatric** A&P

**Mr Nicholas Ferran**  
MSc (Orth. Eng.) MMBS, FRCS (Tr & Orth)  
**Consultant Shoulder & Elbow Surgeon**  
E admin@shoulderandelbowlondon.com  
T 0207 164 6312



**Secretary** XXXXX

**Special Interests** Shoulder, elbow and hand conditions

**Adult/Paediatric** A

**Mr Edward Ibrahim**  
MBBS BSc(Hons) FRCS(Tr&Orth) Med DIC  
**Consultant Orthopaedic Surgeon**  
E admin@thamesshoulderandelbow.co.uk  
T 0203 761 5987



**Secretary** Tanya Stephens

**Special Interests** Shoulder and elbow surgery, upper limb peripheral nerve surgery.

**Adult/Paediatric** A

**Mr Abbas Rashid**  
BSc(Hons) MBBS FRCS(Tr&Orth)  
**Consultant Elbow and Shoulder Surgeon, Honorary Associate Professor UCL**  
E info@londonarmdoc.com  
T 0207 806 4054



**Secretary** Penelope Howard

**Special Interests** Evidence based treatment of elbow and shoulder trauma, sports injuries and degenerative conditions.

**Adult/Paediatric** A&P

**Mr Andrew Richards**  
MS FRCS (Tr. & Orth.)  
**Consultant Orthopaedic Surgeon**  
E richards@fortiusclinic.com  
T 0203 195 2335



**Secretary** Rachel Evans

**Special Interests** Specialist in most shoulder and elbow problems.

**Adult/Paediatric** A

# Orthopaedics (Spine)

**Mr Bob Chatterjee**  
 MBBS MRCS MSc(Distinction) FRCS(Tr&Orth)  
**Consultant Spinal Surgeon**  
 E enquiries@harleystreetspine.co.uk  
 T 0170 769 0349



**Secretary** Sue Purdie  
**Special Interests** Treatment without surgery, minimally invasive surgery, sports injuries, spinal problems in the elderly and complex spinal reconstruction.  
**Adult/Paediatric** A&P

**Mr Nicholas Haden**  
 MA (Cantab) MB BChir  
**Consultant Neurosurgeon**  
 E londonspinalrobotics@gmail.com  
 T 0207 856 0522



**Special Interests** Minimally invasive and navigated spinal surgery, craniovertebral pathologies, Chiari malformation, intradural and intramedullary pathologies, spinal cord dysraphism, CSF leaks and thoracic disc prolapses.  
**Adult/Paediatric** A

**Mr Jan Herzog**  
 MSc  
**Consultant Orthopaedic and Spinal Surgeon**  
 E janherzogspine@gmail.com  
 T 0203 370 1030



**Special Interests** Spinal deformity (scoliosis, kyphosis), degenerative pathologies of the spine, computer navigation in spinal surgery, spinal disease.  
**Adult/Paediatric** A&P

**Mr James Langdon**  
 BSc (Hons) MB BS MRCS (Eng) FRCS (Orth)  
**Consultant Orthopaedic Spinal Surgeon**  
 E londonspinalrobotics@gmail.com  
 T 0207 856 0522



**Special interests** Sciatica, disc prolapse. Spinal stenosis, spinal decompression, microdiscectomy surgery. Vertebral compression fractures, low back pain, disc degeneration and minimally invasive spinal surgical techniques.  
**Adult/Paediatric** A

**Mr Reza Mobasher**  
 BSc MB BS FRCS  
**Consultant Orthopaedic Surgeon**  
 E info.dr.mobasher@gmail.com  
 T 0203 488 0557 / 0788 140 4790



**Special Interests** Back pain, neck pain, sciatica, brachialgia, spinal stenosis, spinal fractures and orthopaedic injuries.  
**Adult/Paediatric** A

**Mr Sean Molloy**  
 MBBS FRCS (Tr and Orth) MSc (Eng)  
**Consultant Trauma and Orthopaedic Surgeon**  
 E patomrseanmolloy@hje.org.uk  
 T 0203 370 1030



**Special Interests** Minimally invasive spinal surgery, computer navigated spinal surgery, robotic spinal surgery, lower back pain, sciatica, adult degenerative disease and deformity.  
**Adult/Paediatric** A&P

**Mr Nitin Shetty**  
 MBBS Ms MRCS M.Phil FRCS  
**Consultant Spinal Surgeon**  
 E contact@medspine.co.uk  
 T 0737 714 1725



**Secretary** Melonie Bryant  
**Special Interests** Minimally invasive spinal surgery, back pain, sciatica, degenerative spinal conditions and disk replacement.  
**Adult/Paediatric** A

**Mr Mark Thomas**  
 MBBS, FRCS (Orth)  
**Consultant Orthopaedic**  
 E Londonspinalrobotics@gmail.com  
 T 020 7856 0522



**Special Interests** Disc disease; Degenerative spine disorders; Spinal injury; Spinal oncology; Spinal disease; Spinal surgery; Cervical spine (diseases and disorders of); Lumbar spine (diseases and disorders of)  
**Adult/Paediatric** A

# Paediatrics

**Dr Badr Chaban**  
 MD MSc MRCPCH  
**Consultant Neonatologist and Paediatrician**  
 E privatepractice@drchaban.co.uk  
 T 0741 145 1410



**Special Interests** Development and neurology, general problems affecting infants, growth, nutrition, respiratory infection and vaccination.  
**Adult/Paediatric** P

**Dr Mike Coren**  
 BSc MB BS MRCP FRCPC  
**Consultant Paediatrician**  
 E mcoren@doctors.org.uk  
 T 0203 312 6710



**Special Interests** General paediatrics, endocrinology and respiratory problems in children.  
**Adult/Paediatric** P

**Dr Warren Hyer**  
 FRCPC MRCP  
**Consultant Paediatric Gastroenterologist**  
 E office@dr-hyer.co.uk  
 T 0208 866 8816



**Secretary** Louise & Tracy  
**Special Interests** Paediatric gastro, nutrition, food allergy, reflux, abdominal pain, constipation, infant crying, cow's milk allergy, rectal bleeding.  
**Adult/Paediatric** P

**Dr Piyusha Kapila**  
 BSc MBChB (Man) MD (Lon) FRCPC  
**Consultant Paediatrician**  
 E iyushakapila@gmail.com  
 T 0207 078 3831



**Special Interests** Paediatric and adolescent Endocrinology, diabetes (MDT pump therapy offered). Other disorders affecting children and young people (general paediatrics) and new born babies.  
**Adult/Paediatric** P

**Dr Michael Markiewicz**  
 BSc MB BS FRCP(UK) FRCPC  
**Consultant Paediatrician**  
 E docmmsec@gmail.com  
 T 0780 260 1701



**Secretary** Christiana Constantinou  
**Special Interests** Any general paediatric problems including children with rheumatological disorders, asthma, and complex allergies.  
**Adult/Paediatric** P

**Dr Wolfgang Muller**  
 MRCP FRCPC  
**Consultant Paediatrician**  
 E pa@drwmuller.com  
 T 0774 286 4100



**Special Interests** Respiratory, allergy and general paediatrics.  
**Adult/Paediatric** P

**Dr Lee Noimark**  
 MRCPCH MBBS MSc BSc  
**Consultant Paediatrician (General and Allergy)**  
 E Inoimark@hotmail.com  
 T 0207 483 5148



**Special Interests** General paediatrics and paediatric allergy.  
**Adult/Paediatric** P

# Pain Management

**Dr Joseph Azzopardi**  
MD FRCA FFPMANZCA FFPMRCA  
**Consultant Pain Medicine and Anaesthesia**

E enquiries@londonpainsolutions.com  
T 0781 079 3549

**Special Interests** Interventional pain management, degenerative spine disease (neck and back pain), headache, facial pain, neuropathic pain, complex regional pain syndrome, neuromodulation (spinal cord stimulation, and more).

**Adult/Paediatric** A



**Dr Stephen Humble**  
MBChB MSc PhD FCARCSI  
**Consultant Spinal Medicine and Pain Management**

E sh@os.clinic  
T 0207 046 8019

**Secretary** Kerry French

**Special Interests** Interventional spinal medicine, injection treatment, radiofrequency denervation, peripheral neuropathy, PRP (platelet rich plasma).

**Adult/Paediatric** A



# Plastic Surgery

**Mr Dariush Nikkhah**  
BM MSc FRCS (Plast)  
**Consultant Plastic Surgeon**

E mnikkhah@theclinic.co.uk  
T 0204 540 3903

**Special Interests** Cosmetic surgery, hand surgery, microvascular surgery, breast reconstruction.

**Adult/Paediatric** A&P



**Miss Joy Odili**  
MBChB MD FRCS (Plast)  
**Consultant Plastic Surgeon**

E pajoyodili@hje.org.uk  
T 0207 078 3874 / 0773 036 8009

**Secretary** Justinal Airall

**Special Interests** Consultant plastic, reconstructive and aesthetic surgeon, skin cancer, melanoma and ear reconstruction.

**Adult/Paediatric** A&P



**Mr Raj Ragoowansi**  
MB MSc FRCS (Plast)  
**Consultant Plastic, Aesthetic and Hand Surgeon**

E medsec@mmp.london  
T 0203 752 1565

**Secretary** Jacquie Taylor

**Special Interests** General plastic surgery including skin lesions and soft tissue trauma. Hand surgery, including peripheral nerve compression, benign hand swellings and Dupuytren's. Aesthetic surgery including breast, body contouring and post pregnancy and soft tissue rebalancing.

**Adult/Paediatric** A&P



**Dr Jesper Sorensen**  
MD PhD  
**Consultant Plastic Surgeon**

E info@sorensenclinic.com  
T 0207 600 4444

**Special Interests** Facial aesthetic surgery, facial reconstructive surgery, facelift, neck lift, brow lift, eyelid surgery, fat grafting, customised facial implants, treatment for facial asymmetries and facial palsy.

**Adult/Paediatric** A



# Plastic Surgery

**Mr Stephen Hamilton**  
MB ChB FRCS (Glas) FRCS (Edin) MD FRCS (Plast)  
**Consultant Plastic Surgeon**

E sinead.rooney@hje.org.uk  
T 0207 432 8266

**Secretary** Sinead Rooney

**Special Interests** Cancer reconstruction (including skin cancer, head and neck and breast cancer), skin cancer management, microsurgery, aesthetic surgery.

**Adult/Paediatric** A&P



**Mr Mark Ho-Asjoe**  
MB.Bch FRCS FRCS(Plast)  
**Consultant Plastic Surgeon**

E cosmeticsurgery@hje.org.uk  
T 0203 370 1015

**Special Interests** Breast and body contouring, facial aesthetic, microsurgical reconstruction and asian aesthetic.

**Adult/Paediatric** A



**Mr Neil Toft**  
BSc MBChB MD FRCS(Plast)  
**Consultant Plastic and Hand Surgeon**

E sinead.rooney@hje.org.uk  
T 0207 432 8266

**Secretary** Sinead Rooney

**Special Interests** Moles, skin cancer, and hand surgery.

**Adult/Paediatric** A



**Miss Lauren Uppal**  
MBChB MRCS FRCS(Plast) Dip Hand Surg  
**Consultant Plastic Surgeon**

E info@plasticsurgeon.london  
T 0203 326 3793

**Secretary** Sarah Glynn

**Special Interests** Hand surgery (Dupuytren's, carpal tunnel syndrome, cubital tunnel syndrome, ganglions, trigger fingers, rheumatoid arthritis, osteoarthritis, Raynaud's) and more.

**Adult/Paediatric** A&P



**Mr Alex Karidis**  
MD FRCS  
**Consultant Plastic Surgeon**

E enquiries@karidis.co.uk  
T 0207 432 8727

**Special Interests** Plastic and cosmetic surgery.

**Adult/Paediatric** A



**Mrs Jacqueline Lewis**  
FRCS (Glasg) FRCS (Plast)  
**Consultant Plastic Surgeon**

E hello@drjacquelinelewis.com  
T 0203 370 1041

**Special Interests** Autologous fat grafting, breast enhancement, breast reduction, mastopexy, breast asymmetry, breast reconstruction.

**Adult/Paediatric** A



**Mr Simon Withey**  
MS FRCS FRCS(Ed) FRCS(Plast)  
**Consultant Plastic and Reconstructive Surgeon**

E withey@lpsa.co.uk  
T 0207 432 8278

**Secretary** Aleks

**Special Interests** Chest and abdominal wall reconstruction, cosmetic and reconstructive surgery, non-surgical treatments and skin cancer surgery.

**Adult/Paediatric** A&P



## Respiratory Medicine

**Professor Margaret Johnson**  
MD FRCP  
**Consultant Respiratory Physician**

**E** fiona.harkin@hje.org.uk  
**T** 0207 806 4062

**Secretary** Fiona Harkin

**Special Interests** Respiratory infection, long-COVID, post-COVID cough, breathlessness, tuberculosis, HIV, COPD, asthma, ILF, lung cancer, bronchiectasis.

**Adult/Paediatric** A



**Dr Dan Ornel**  
MA MD FRCP  
**Respiratory Consultant**

**E** drornadel@theclinic.co.uk  
**T** 0208 124 4952

**Secretary** Medserv

**Special Interests** Cough, breathlessness, asthma, lung cancer, 'Long-COVID', chest pain, COPD, sleep apnoea, bronchoscopy and EBUS.

**Adult/Paediatric** A



## Stroke

**Dr Sageet Amlani**  
MBChB Oxon, MRCP  
**Consultant in Stroke Medicine**

**E** amlanisecretary@gmail.com  
sageet.amlani@nhs.net

**T** 0774 896 3483 / 0207 078 3841

**Special Interests** Stroke - acute and rehabilitation, transient ischaemic attack, geriatric medicine.

**Adult/Paediatric** A



**Dr Susen Bhattacharyya**  
MBBS (Gold Medal) DTM&H (Gold Medal) FRCP  
**Consultant Geriatric and General Medicine**

**E** drsb.sec@gmail.com  
**T** 0207 806 4060

**Secretary** Beena Haria

**Special Interests** Geriatric medicine, orthogeriatrics, perioperative medicine, acute general medicine and neuro-rehabilitation.

**Adult/Paediatric** A



## Rheumatology

**Dr Richard G. Rees**  
MBCh FRCP  
**Consultant Rheumatologist**

**E** patodrrrees@hje.org.uk  
**T** 0203 370 1007

**Secretary** Melanie Sewnath

**Special Interests** All adult rheumatology. Inflammatory arthritis, OA, gout, osteoporosis, joint and soft tissue injections, spinal pain.

**Adult/Paediatric** A



**Dr Colin Tench**  
MB BChir MA MD FRCP  
**Consultant Rheumatologist**

**E** doctor@colintench.co.uk  
**T** 0203 312 7886

**Special Interests** Gout, rheumatoid arthritis, lupus, Sjogren's syndrome, osteoarthritis, osteoporosis, back pain and joint and soft tissue injections.

**Adult/Paediatric** A



**Professor Jeremy Chataway**  
MA PhD FRCP  
**Consultant Neurologist**

**E** sonia.khan@hje.org.uk  
**T** 0757 054 2279

**Secretary** Sonia Khan

**Special Interests** General neurology including headache, stroke, multiple sclerosis.

**Adult/Paediatric** A



**Dr Eric Lever**  
**Consultant Endocrinologist**

**T** 020 7806 4000

**Special Interests** Diabetes, including diabetes mellitus; Thyroid disorders / surgery; Endocrinology for infertility

**Adult/Paediatric** A



**Dr Shane Roche**  
MB FRCP  
**Consultant General Medicine**

**E** drshaneroche@yahoo.co.uk  
**T** 0776 875 2641

**Secretary** Wendy Belgrave

**Special Interests** Geriatric medicine, general medicine, dementia, falls, stroke, domiciliary visits, parkinson's disease and rehabilitation.

**Adult/Paediatric** A



**Dr Stuart Webb**  
MBBS BSc MD FRCP  
**Consultant Physician and Hon. Consultant Cardiologist (UCLH)**

**E** patodrwebb@hje.org.uk  
**T** 0207 078 3808 / 0751 764 3302

**Secretary** Sofia

**Special Interests** Cardiovascular disease in the elderly, stroke, perioperative medicine and arrhythmia management.

**Adult/Paediatric** A



## Sports Medicine

**Dr James Thing**  
MBBS BSc MRCGP FFSEM  
**Consultant Sport and Exercise Medicine**

**E** info@thejointinjectionclinic.com  
**T** 0208 004 6659

**Special Interests** Hand and wrist injury, upper limb injury/pathology (including frozen shoulder, impingement, tennis elbow and osteoarthritis), lower limb tendon disorders, musculoskeletal ultrasound and ultrasound-guided injection and more.

**Adult/Paediatric** A&P \*aged 12 and over



## Urology

**Mr Leye Ajayi**

MBBS MD FRCS (Urol)

**Consultant Urological Surgeon**

E pa@urology-london.com

T 0207 432 8333

**Special Interests** Adult urology, rapid access, one stop haematuria and prostate assessment. Laser surgery for stone disease, lithotripsy and andrology, erectile dysfunction and female incontinence.

**Adult/Paediatric** A**Mr Andrew Ballaro**

MD FRCS(urol)

**Consultant Urological Surgeon**

E andrew.ballaro@privatepractice.healthcare

T 0207 042 1790

**Secretary** Daisy Penwarden

**Special Interests** All adult general urological problems, comprehensive management of stone and prostate disease including laser surgery and ESWL for complex stones and HoLEP for the enlarged prostate.

**Adult/Paediatric** A**Mr Sudhanshu Chitale**

FRCS (Urol) FEBU DNB (Urol) Diploma Urol (LON) FRCS (Eng) FICS MS (Gen Surg) MBBS

**Consultant Urological Surgeon and Andrologist**

E chitalenorwich@aol.com

T 0774 894 4385

**Special Interests** Prostatic diseases including cancer, prostatitis, male sexual dysfunction inc peyronie's disease, circumcision, vasectomy, haematuria, PSA, bladder cancer, urethral stricture and kidney stones.

**Adult/Paediatric** A&P**Mr Simon Choong**

MBBS FRCS (Eng) FRCSEd MS FRCS (Urol)

**Consultant Urologist**

E stjohnswoodclinic@gmail.com

T 0207 078 3888

**Special Interests** Practices general urology, specialises in kidney stones, lithotripsy, prostate and bladder diseases, urinary tract infections and haematuria (blood in urine).

**Adult/Paediatric** A&P**Mr Ronald A. Miller**

MS FRCS FRGS

**Consultant Urological Surgeon**

E info@woolastonhouse.com

T 0208 341 3422

**Secretary** Debbie Vandeppeer (Woolaston House PMC)

**Special Interests** Urinary tract infections (UTIs), urological pain syndromes, assessment and treatment of prostate disease including prostatitis, scrotal and testicular surgery, circumcision and general urology

**Adult/Paediatric** A**Dr Vibhash Mishra**

Hon. Associate Professor, UCL

**Consultant Urologist**

E marydhiya.joseph@nhs.net

T 0751 853 0406

**Secretary** Mary Joseph

**Special Interests** Bladder dysfunction, urinary incontinence, UTIs, BPH, haematuria, peno-scrotal surgery, urodynamics, neuro-urology and lower urinary tract symptoms.

**Adult/Paediatric** A**Mr Jeremy Ockrim**

MD BSc(Hon) FRCS(Urol)

**Consultant Urologist**

E ockrim@londonurologyspecialists.co.uk

T 0300 302 0202

**Special Interests** Female and reconstructive urology and urinary incontinence, UTI, pelvic organ prolapse, pelvic and bladder pain syndromes. Functional urology and urodynamics, investigation of haematuria (blood in the urine), prostate assessment and more.

**Adult/Paediatric** A

## Vascular Surgery

**Mr Colin Bicknell**

BM MD FRCS

**Consultant Vascular Surgeon**

E hasemapatel@nhs.net

T 0207 096 0168

**Special Interests** Vascular surgery, arterial and venous. Vascular conditions including arterian, venous, lymphatic and thoracic outlet syndrome. Vascular screening and lifestyle changes.

**Adult/Paediatric** A**Mr David Greenstein**

BSc MD FRCS

**Consultant Vascular Surgeon**

E bvlc@varicoseveins.co.uk

T 0207 286 7274

**Secretary** Angela

**Special Interests** Varicose vein expert, deep vein thrombosis, swollen leg, leg ulcers, spider and thread veins, pelvic vein congestion syndrome.

**Adult/Paediatric** A&P



# Index: Consultants by service

	Specialty	A Adult / P Paediatric	Page No
<b>Mr Muhamed Al-Dubaisi</b>	Breast Surgery	A	37
<b>Ms Mahwash Babar</b>	Breast Surgery	A	
<b>Mr Arunmoy Chakravorty</b>	Breast Surgery	A	37
<b>Miss Joanna Franks</b>	Breast Surgery	A	
<b>Miss Jasdeep Gahir</b>	Breast Surgery	A	37
<b>Mr Neil Johns</b>	Breast Surgery	A	37
<b>Mrs Jacqueline Lewis</b>	Breast Surgery	A	37
<b>Miss Cheryl Lobo</b>	Breast Surgery	A	37
<b>Mr Peng Tan</b>	Breast Surgery	A	37
<b>Professor Jayant S Vaidya</b>	Breast Surgery	A	37
<b>Dr David Brull</b>	Cardiology	A	
<b>Dr Richard Carroll</b>	Cardiology	A	
<b>Dr Piers Clifford</b>	Cardiology	A	
<b>Dr John Gerard Coghlan</b>	Cardiology	A	
<b>Dr Joseph Davar</b>	Cardiology	A	
<b>Dr Anna Herrey</b>	Cardiology	A	
<b>Dr Oliver Guttmann</b>	Cardiology	A	
<b>Dr Parmjit Jeetley</b>	Cardiology	A	
<b>Dr Tushar Kotecha</b>	Cardiology	A	
<b>Dr Tim Lockie</b>	Cardiology	A	
<b>Professor Roby Rakhit</b>	Cardiology	A	38
<b>Dr Joseph Tomson</b>	Cardiology	A	
<b>Dr Stuart Webb</b>	Cardiology	A	
<b>Dr Shankar Sridharan</b>	Paediatric Cardiology	P	38
<b>Dr Mark Westwood</b>	Cardiology	A	
<b>Dr Carol Jane Whelan</b>	Cardiology	A	38
<b>Dr Carla Cordivari</b>	Clinical Neurophysiology	A	38
<b>Mr Alexander Woodhams</b>	Clinical Neurophysiology	A & P	
<b>Mr Panagiotis Drymoussis</b>	Colorectal & GI	A	39
<b>Mr Lee Dvorkin</b>	Colorectal & GI	A	39
<b>Mr Majid Hashemi</b>	Colorectal & GI	A	39
<b>Mr Asif Haq</b>	Colorectal & GI	A	39
<b>Professor Patrick Kennedy</b>	Colorectal & GI	A	39

	Specialty	A Adult / P Paediatric	Page No
Mr Martin Kurzer	Colorectal & GI	A	39
Dr Anthony Lerman	Colorectal & GI	A	39
Dr Sheena Mankodi	Colorectal & GI	A	39
Mr Hasan Mukhtar	Colorectal & GI	A	40
Mr Romi Navaratnam	Colorectal & GI	A	40
Dr Clive Onnie	Colorectal & GI	A	40
Mr Nikhil Pawa	Colorectal & GI	A	
Dr Deepak Suri	Colorectal & GI	A	40
Mr Massimo Varcada	Colorectal & GI	A	40
Dr Roser Vega	Colorectal & GI	A	40
Dr Voi Shim Wong	Colorectal & GI	A	40
Mr Paul Ziprin	Colorectal & GI	A	40
Dr Pamla Terezinha Fiandeiro	Dermatology	A & P	
Dr Karolina Gholam	Dermatology	P	41
Dr Portia Goldsmith	Dermatology	A & P	
Dr David Harris	Dermatology	A & P	41
Professor Victoria Jolliffe	Dermatology	A	41
Dr Jennifer Jones	Dermatology	A	41
Dr Natasha Kapur	Dermatology	A & P	41
Dr Tabi Leslie	Dermatology	A	41
Dr Janet Ross	Dermatology	A & P	41
Dr Edward Seaton	Dermatology	A	41
Professor Jane Setterfield	Dermatology	A	42
Mr Aadarsh Shah	Dermatology	A	
Mr Jahangir Ahmed	Ear Nose and Throat	A & P	42
Mr Ahmed Hassan Allam	Ear Nose and Throat	A & P	
Professor Paul Chatrath	Ear Nose and Throat	A & P	42
Mr Nicholas Eynon-Lewis	Ear Nose and Throat	A & P	42
Mr Roy Farrell	Ear Nose and Throat	A & P	
Mr Jonathan Fishman	Ear Nose and Throat	A & P	42
Miss Zi-Wei Liu	Ear Nose and Throat	A	
Mr Ravinder Singh Natt	Ear Nose and Throat	A & P	43
Mr Abhi Parikh	Ear Nose and Throat	A & P	43

	Specialty	A Adult / P Paediatric	Page No
Mr Cheka Spencer	Ear Nose and Throat	A & P	
Professor Neil Tolley	Ear Nose and Throat	A & P	43
Dr Eric Lever	Endocrinology	A	43
Dr Ayesha Siddiqi	Endocrinology	A	43
Dr Sageet Amlani	General Medicine	A	
Dr Rajaram (Raj) Bathula	General Medicine	A	
Dr Michael Beckles	General Medicine	A	
Dr Anupam Bhattacharjee	General Medicine	A	44
Dr Sushen Bhattacharyya	General Medicine	A	
Dr Michael Brown	General Medicine	A	
Dr Huw Lewis Clarke Beynon	General Medicine	A	44
Dr Carla Cordivari	General Medicine	A	
Dr Michael Fertleman	General Medicine	A	
Professor Margaret Johnson	General Medicine	A	
Dr Sophie Molloy	General Medicine	A	44
Dr Dean Noimark	General Medicine	A	44
Dr Dan Ornel	General Medicine	A	
Dr John Philip O'Dwyer	General Medicine	A	44
Dr Richard G. Rees	General Medicine	A	44
Dr Shane Roche	General Medicine	A	
Dr Benjamin Schreiber	General Medicine	A	44
Dr Ayesha Siddiqi	General Medicine	A	44
Dr Hafizur Rahman Syed	General Medicine	A	
Dr Stuart Webb	General Medicine	A	
Dr Voi Shim Wong	General Medicine	A	
Dr Leah Austin	General Practice	A & P	45
Dr Laura Cullen	General Practice	A & P	45
Dr Eric Dan Goor	General Practice	A & P	45
Dr Nina Ghosh-Chowdhury	General Practice	A & P	45
Dr Daniel Gordon	General Practice	A & P	45
Dr Tal Helbitz	General Practice	A & P	45
Dr Adam Wander	General Practice	A & P	45
Dr Delphine Sekri	General Practice	A & P	45

	Specialty	A Adult / P Paediatric	Page No
Mr Obiekezie Agu	General Surgery	A & P	46
Mr Panagiotis Drymouisis	General Surgery	A	
Mr Lee Dvorkin	General Surgery	A	
Miss Jasdeep Gahir	General Surgery	A	
Mr Asif Haq	General Surgery	A	
Mr Majid Hashemi	General Surgery	A	
Mr Syed Tahir Hussain	General Surgery	A	
Mr Martin Kurzer	General Surgery	A	
Mr Hasan Mukhtar	General Surgery	A	
Mr Romi Navaratnam	General Surgery	A	
Professor Vassilios Papalois	General Surgery	A	46
Mr Nikhil Pawa	General Surgery	A	
Mr Ash Prabhudesai	General Surgery	A	
Mr Paul Ziprin	General Surgery	A	
Mr Nilesh Agarwal	Gynaecology & Obstetrics	A	46
Mr Yinka Akinfenwa	Gynaecology & Obstetrics	A	46
Mr Joe Aquilina	Gynaecology & Obstetrics	A	47
Mr Christian Barnick	Gynaecology & Obstetrics	A	47
Ms Charlotte Chaliha	Gynaecology & Obstetrics	A	47
Mr Demetrios Leonidas Economides	Gynaecology & Obstetrics	A	47
Ms Theresa Freeman-Wang	Gynaecology & Obstetrics	A	
Mr Kevin Harrington	Gynaecology & Obstetrics	A	
Professor Vik Khullar	Gynaecology & Obstetrics	A	
Miss Fanni Kokka	Gynaecology & Obstetrics	A	47
Mrs Saswati Maitra	Gynaecology & Obstetrics	A	47
Dr Hikmet Naoum	Gynaecology & Obstetrics	A	47
Mr Ramesan Navaratnarajah	Gynaecology & Obstetrics	A	
Mr Nitish Narvekar	Gynaecology & Obstetrics	A	
Mr Hemant Vakharia	Gynaecology & Obstetrics	A	
Mr Emeka Okaro	Gynaecology & Obstetrics	A	47
Professor Ertan Saridogan	Gynaecology & Obstetrics	A	
Dr Frederick Chen	Haematology	A	48
Dr Anastasia Chew	Haematology	A	48

	Specialty	A Adult / P Paediatric	Page No
Dr Abdul Shlebak	Haematology	A	
Dr Sorena Kiani	Immunology & Allergy	A & P	48
Mr Abdul Ahmed	Maxillofacial Surgery	A & P	
Mr Deepak Komath	Maxillofacial Surgery	A & P	48
Dr Jennifer Cross	Nephrology	A	
Dr Peter Dupont	Nephrology	A	48
Dr Shabbir Moochhala	Nephrology	A	
Dr Ruth Pepper	Nephrology	A	
Dr Adnan Al-Araji	Neurology	A & P	
Dr Anupam Bhattacharjee	Neurology	A	
Professor Jeremy Chataway	Neurology	A	
Dr Carla Cordivari	Neurology	A	
Dr Valeria Iodice	Neurology/Autonomic Medicine	A	
Dr Sophie Molloy	Neurology	A	
Dr John Philip O'Dwyer	Neurology	A	49
Mr Nicholas Haden	Neurosurgery	A	
Mr Jonathan Hyam	Neurosurgery	A	
Ms Evgenia Anikina	Ophthalmology	A & P	
Professor Riaz Asaria	Ophthalmology	A	49
Mr Tariq Ayoub	Ophthalmology	A & P	
Mr Mukhtar Bizrah	Ophthalmology	A & P	
Mr Graham Duguid	Ophthalmology	A	49
Mr Zine Elhousseini	Ophthalmology	A	49
Mr Marwan Ghabra	Ophthalmology	A & P	
Dr Jason Ho	Ophthalmology	A	49
Miss Rajni Jain	Ophthalmology	A	50
Mr Saurabh Jain	Ophthalmology	A & P	
Dr Nick Koutroumanos	Ophthalmology	A & P	50
Mr Richard Lee	Ophthalmology	A	
Miss Vickie Lee	Ophthalmology	A	
Mr Simon Gabriel Levy	Ophthalmology	A & P	
Mr Daniele Lorenzano	Ophthalmology	A & P	
Mr Nabeel Malik	Ophthalmology	A	50

	Specialty	A Adult / P Paediatric	Page No
Mr Danny Mitry	Ophthalmology	A	
Mr Raal Obikpo	Ophthalmology	A & P	
Mr Dipak Parmar	Ophthalmology	A	
Mr Marcus Posner	Ophthalmology	A & P	
Mr Zaid Shalchi	Ophthalmology	A & P	
Mr Richard Scawn	Ophthalmology	A	50
Mr Ameet Shah	Ophthalmology	A	
Mrs Sabrina Shah-Desai	Ophthalmology	A	50
Ms Pallavi Tyagi	Ophthalmology	A & P	
Mr Robbie Walker	Ophthalmology	A	50
Mr Laurence Whitefield	Ophthalmology	A	50
Mr Hadi Zambarakji	Ophthalmology	A	50
Mr Mark Davies	Orthopaedics (Foot & Ankle)	A	51
Mr James Davis	Orthopaedics (Foot & Ankle)	A	51
Mr Aria Ghassemi	Orthopaedics (Foot & Ankle)	A & P	51
Mr Martin Klinke	Orthopaedics (Foot & Ankle)	A	51
Mr Matthew Solan	Orthopaedics (Foot & Ankle)	A & P	51
Professor Mark Tagoe	Orthopaedics (Foot & Ankle)	A	51
Mr Michael Elvey	Orthopaedics (Hand & Wrist)	A & P	52
Mr Maxim Horwitz	Orthopaedics (Hand & Wrist)	A & P	52
Mr Alistair Hunter	Orthopaedics (Hand & Wrist)	A & P	52
Mr Daniel Shaerf	Orthopaedics (Hand & Wrist)	A & P	52
Mr Elliot Sorene	Orthopaedics (Hand & Wrist)	A & P	52
Mr Ghias Bhattee	Orthopaedics (Hip & Knee)	A	53
Professor Damian Griffin	Orthopaedics (Hip & Knee)	A	53
Mr Chinmay Gupte	Orthopaedics (Hip & Knee)	A & P	53
Mr Parag Kumar Jaiswal	Orthopaedics (Hip & Knee)	A & P	53
Mr Amer Khan	Orthopaedics (Hip & Knee)	A	53
Mr Sujith Konan	Orthopaedics (Hip & Knee)	A & P	53
Mr Alex Liddle	Orthopaedics (Hip & Knee)	A	53
Mr Nimalan Maruthainar	Orthopaedics (Hip & Knee)	A	53
Mr Satyajit Naique	Orthopaedics (Hip & Knee)	A	54
Mr Harold Nwaboku	Orthopaedics (Hip & Knee)	A	54

	Specialty	A Adult / P Paediatric	Page No
Mr Akash Patel	Orthopaedics (Hip & Knee)	A & P	54
Mr Joyti Saksena	Orthopaedics (Hip & Knee)	A & P	54
Mr Ian Sinha	Orthopaedics (Hip & Knee)	A & P	54
Mr Robin Strachan	Orthopaedics (Hip & Knee)	A	54
Mr James Youngman	Orthopaedics (Hip & Knee)	A & P	54
Mr Raymond Anakwe	Orthopaedics (Shoulder & Elbow)	A & P	55
Mr Toby Baring	Orthopaedics (Shoulder & Elbow)	A & P	55
Mr Nicholas Ferran	Orthopaedics (Shoulder & Elbow)	A	55
Mr Edward Ibrahim	Orthopaedics (Shoulder & Elbow)	A	55
Mr Abbas Rashid	Orthopaedics (Shoulder & Elbow)	A & P	55
Mr Andrew Richards	Orthopaedics (Shoulder & Elbow)	A	55
Mr Rajiv Bajekal	Orthopaedics (Spinal)	A & P	
Mr Bob Chatterjee	Orthopaedics (Spinal)	A & P	56
Mr Nicholas Haden	Orthopaedics (Spinal)	A	56
Mr Jan Herzog	Orthopaedics (Spinal)	A & P	56
Dr Stephen Humble	Orthopaedics (Spinal)	A	
Mr James Langdon	Orthopaedics (Spinal)	A	56
Mr Reza Mobasheri	Orthopaedics (Spinal)	A	56
Mr Sean Molloy	Orthopaedics (Spinal)	A & P	56
Mr Colin Nnadi	Orthopaedics (Spinal)	A & P	
Mr Am Rai	Orthopaedics (Spinal)	A	
Mr Nitin Shetty	Orthopaedics (Spinal)	A	56
Mr Mark Thomas	Orthopaedics (Spinal)	A	56
Mr Charalambos Charalambides	Orthopaedics (Lower Limb)	A & P	
Mr Jasvinder Singh Daurka	Orthopaedics (Lower Limb)	A	
Mr Yaser Jabbar	Orthopaedics (Lower Limb)	A & P	
Mr Rohit Madhav	Orthopaedics (Lower Limb)	A & P	
Mr Ian McDermott	Orthopaedics (Lower Limb)	A	
Mr Paddy Subramanian	Orthopaedics (Lower Limb)	A	
Mr Onur Berber	Orthopaedics (Upper Limb)	A & P	
Mr Steven Corbett	Orthopaedics (Upper Limb)	A & P	
Mr Peter Domos	Orthopaedics (Upper Limb)	A	
Mr Marcus Lee	Orthopaedics (Upper Limb)	A	
Mr Dimitrios Tsekas	Orthopaedics (Upper Limb)	A	

	Specialty	A Adult / P Paediatric	Page No
Dr Dionysios Alexandrou	Paediatrics	P	
Dr Badr Chaban	Paediatrics	P	57
Dr Mike Coren	Paediatrics	P	57
Dr Sunit Godambe	Paediatrics	P	
Dr Warren Hyer	Paediatrics	P	57
Dr Piyusha Kapila	Paediatrics	P	57
Dr Michael Markiewicz	Paediatrics	P	57
Dr Wolfgang Muller	Paediatrics	P	57
Dr Lee Noimark	Paediatrics	P	57
Dr Shankar Sridharan	Paediatrics	P	
Dr Basil Almahdi	Pain Management	A	
Dr Joseph Azzopardi	Pain Management	A & P	58
Dr Stephen Humble	Pain Management	A	58
Mr Kuen Yeow Chin	Plastic Surgery	A & P	
Mr Shadi Ghali	Plastic Surgery	A & P	
Mr Rana Das-Gupta	Plastic Surgery	A	
Mr Stephen Hamilton	Plastic Surgery	A & P	58
Mr Mark Ho-Asjoe	Plastic Surgery	A	58
Mr Matt Ives	Plastic Surgery	A & P	
Professor Abhilash Jain	Plastic Surgery	A & P	
Mr Alex Karidis	Plastic Surgery	A	58
Mr Manaf Khatib	Plastic Surgery	A	
Mr Graham Lawton	Plastic Surgery	A & P	
Mr Jorge Leon-Villapalos	Plastic Surgery	A & P	
Mrs Jacqueline Lewis	Plastic Surgery	A	58
Mr Alok Misra	Plastic Surgery	A & P	
Mr Arvind Mohan	Plastic Surgery	A & P	
Miss Pari-Naz Mohanna	Plastic Surgery	A	
Mr Dariush Nikkhah	Plastic Surgery	A & P	59
Miss Joy Odili	Plastic Surgery	A & P	59
Mr Raj Ragoowansi	Plastic Surgery	A & P	59
Mr Richard Scawn	Plastic Surgery	A	
Mrs Sabrina Shah-Desai	Plastic Surgery	A	

	Specialty	A Adult / P Paediatric	Page No
Ms Marlene See	Plastic Surgery	A	
Dr Jesper Sorensen	Plastic Surgery	A	59
Mr Tomas Tickunas	Plastic Surgery	A & P	
Mr Neil Toft	Plastic Surgery	A	59
Miss Lauren Uppal	Plastic Surgery	A & P	59
Mr William Van Niekerk	Plastic Surgery	A	
Mr Simon Withey	Plastic Surgery	A & P	59
Mr Richard Young	Plastic Surgery	A & P	
Mr Stephen Kriss	Podiatric Surgery	A & P	
Mr Antony Kontos	Podiatric Surgery	A	
Professor Mark Tagoe	Podiatric Surgery	A	
Miss Madeleine A Wheeler	Podiatric Surgery	A & P	
Dr Robin Powell	Psychiatry	A	
Dr Vimal Sivasanker	Psychiatry	A	
Dr Michael Beckles	Respiratory Medicine	A	
Professor Howard Branley	Respiratory Medicine	A	
Dr Shalin Diwanji	Respiratory Medicine	A & P	
Dr Sarah Elkin	Respiratory Medicine	A	
Professor Margaret Johnson	Respiratory Medicine	A	60
Dr Dan Ornadell	Respiratory Medicine	A	60
Dr Amit Patel	Respiratory Medicine	A	
Dr Huw Lewis Clarke Beynon	Rheumatology	A	
Dr Cecil B Colaço	Rheumatology	A & P	
Dr Gayatri Mittal	Rheumatology	A	
Dr Richard G. Rees	Rheumatology	A	60
Dr Benjamin Schreiber	Rheumatology	A	
Dr Colin Tench	Rheumatology	A	60
Dr James Thing	Sports Medicine	A & P	60
Dr Sageet Amlani	Stroke Medicine	A	61
Dr Rajaram (Raj) Bathula	Stroke Medicine	A	
Dr Sushen Bhattacharyya	Stroke Medicine	A	61
Professor Jeremy Chataway	Stroke Medicine	A	61
Dr Eric Lever	Stroke Medicine	A	61

	Specialty	A Adult / P Paediatric	Page No
<b>Dr Dean Noimark</b>	Stroke Medicine	A	
<b>Dr Shane Roche</b>	Stroke Medicine	A	61
<b>Dr Stuart Webb</b>	Stroke Medicine	A	61
<b>Mr Leye Ajayi</b>	Urology	A	62
<b>Mr Andrew Ballaro</b>	Urology	A	62
<b>Mr Sudhanshu Chitale</b>	Urology	A & P	62
<b>Mr Simon Choong</b>	Urology	A & P	62
<b>Mr Rajesh Kavia</b>	Urology	A & P	
<b>Mr Frank Lee</b>	Urology	A & P	
<b>Mr Ronald A. Miller</b>	Urology	A	62
<b>Dr Vibhash Mishra</b>	Urology	A	62
<b>Mr Jeremy Ockrim</b>	Urology	A	62
<b>Ms Philippa Sangster</b>	Urology	A	
<b>Mr Colin Bicknell</b>	Vascular Surgery	A	63
<b>Mr David Greenstein</b>	Vascular Surgery	A & P	63
<b>Mr Syed Tahir Hussain</b>	Vascular Surgery	A	
<b>Mr Pranav Somaiya</b>	Vascular Surgery	A	





St John &  
St Elizabeth Hospital

[www.hje.org.uk](http://www.hje.org.uk)